

Product details:

Item No.: 846018 BK 00

Model No.: U20S

Technical data:

Input: 12V/1A

CCT: 5000 ± 500K / 4000 ± 400K / 3000 ± 300K

Luminous flux: 200Lm ± 50Lm; 300Lm ± 50Lm; 100Lm ± 50Lm

Lighting power: 3.5-4.5W; 2-3W; 4.5-6.5W

CRI: >80Ra

Tools list:



- 1.Soldering iron
- 2.Electric screwdriver
- 3.Pry piece
- 4.Tweezer

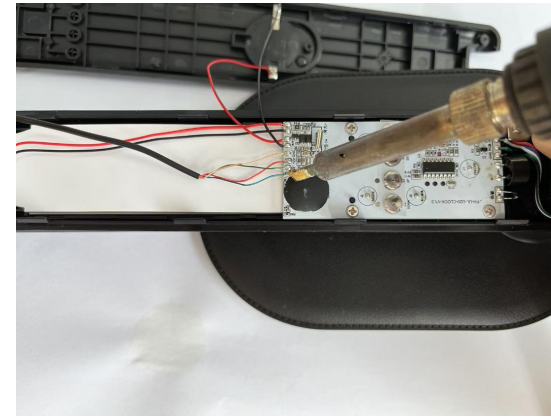
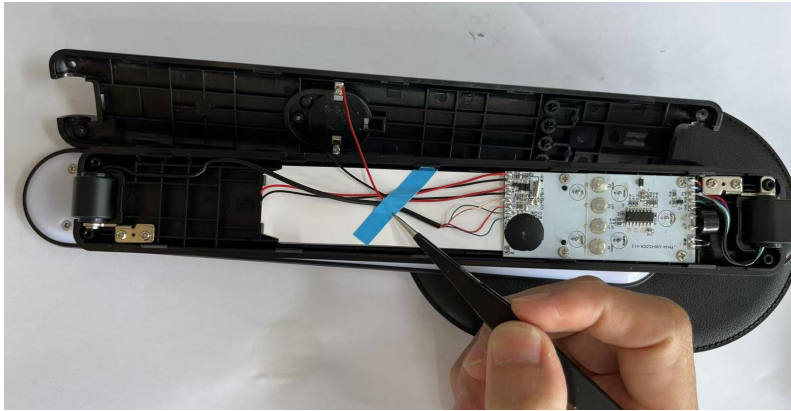
Instructions on how to remove the light source:

Note:Please operate following steps when the product is powered off.

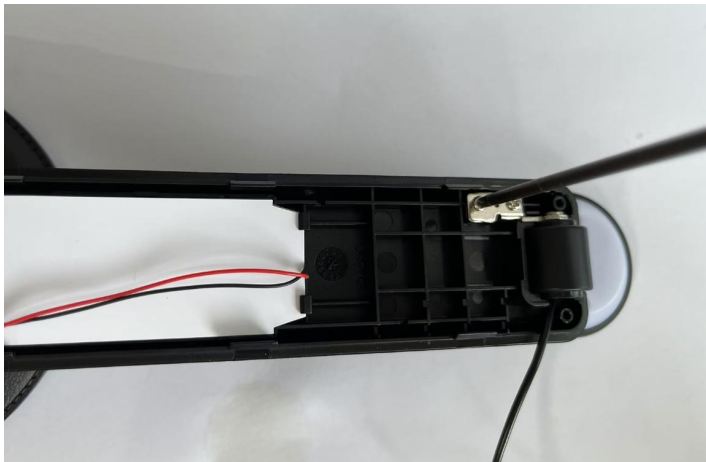
Step1: Use an electric screwdriver to remove the four screws on the back of the lamp, and then use a pry piece to separate the plastic shell along the gap of the lamp body.



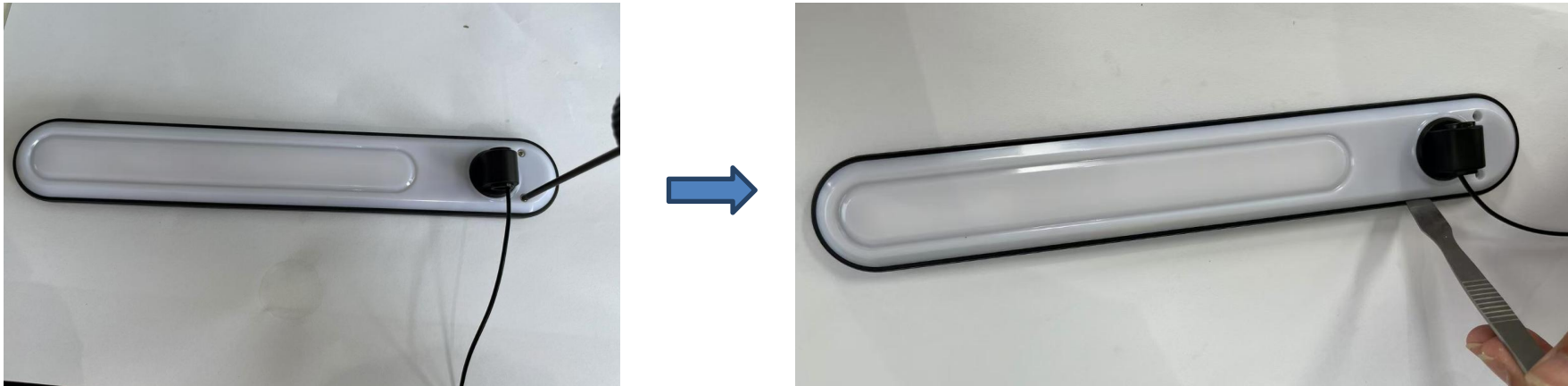
Step2: Use tweezers to remove the adhesive tape used to fix the internal wires, and then use a soldering iron to remove the four connecting wires of the lamp board from the clock board.



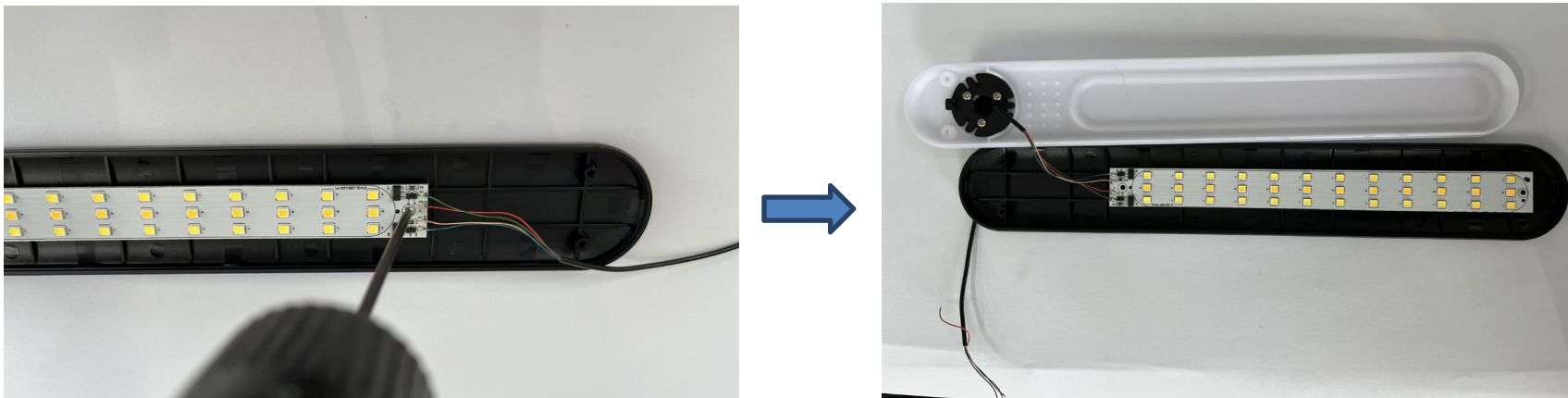
Step3: Use an electric screwdriver to remove the two screws on the rotating shaft that connects the lamp cap to the lamp body, thus obtaining a separate lamp cap.



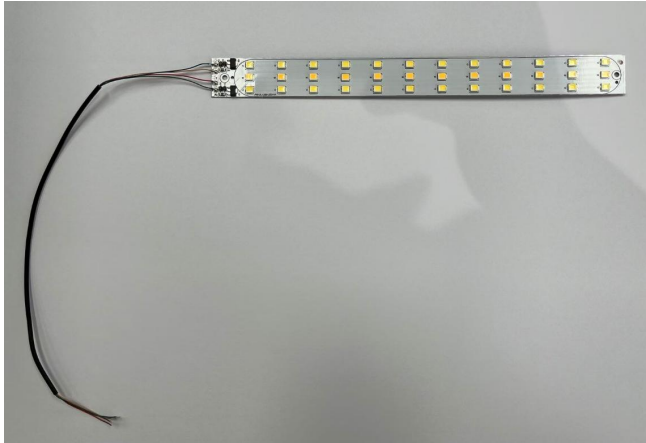
Step4: Use an electric screwdriver to remove the two screws on the lamp head, and then use a pry piece to open the plastic shell along the gap of the lamp head cover.



Step5: Use an electric screwdriver to remove the two screws on the lamp board.



Step6: Now the light source was removed without being permanently damaged for verification purposes.



Red line & blue line: Positive pole “ + ”

Golden line & green line: Negative pole “-”