

Product details:

Item No.: 844838

Model No.: DH-88006

Technical data:

Input: 5V/1A

CCT: 5500K \pm 300K

Luminous flux: 150 \pm 50Lm

Lighting power: 3.6 \pm 1W(Max)

CRI: >80Ra

Tools list:

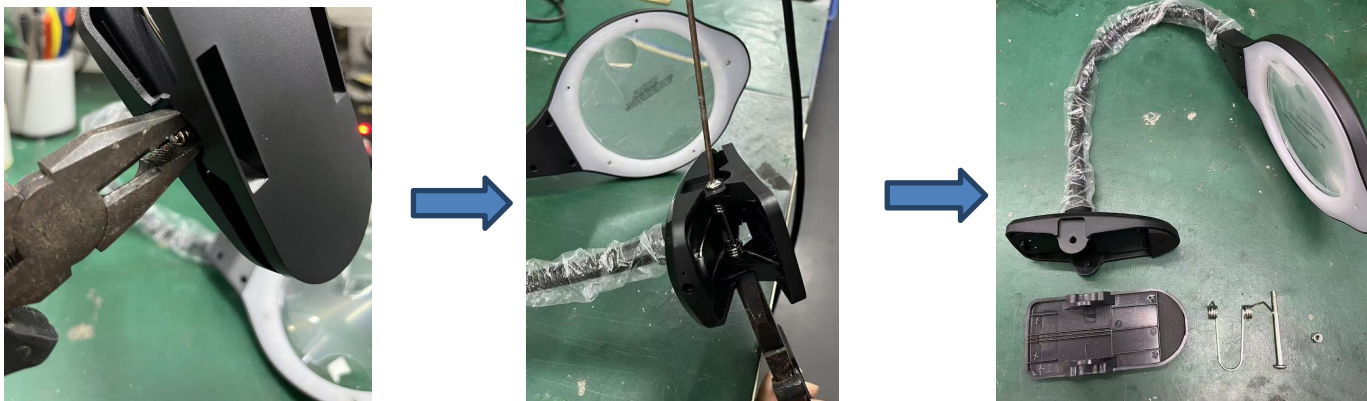


1. Soldering iron
2. Electric screwdriver
3. Pry piece
4. Pliers

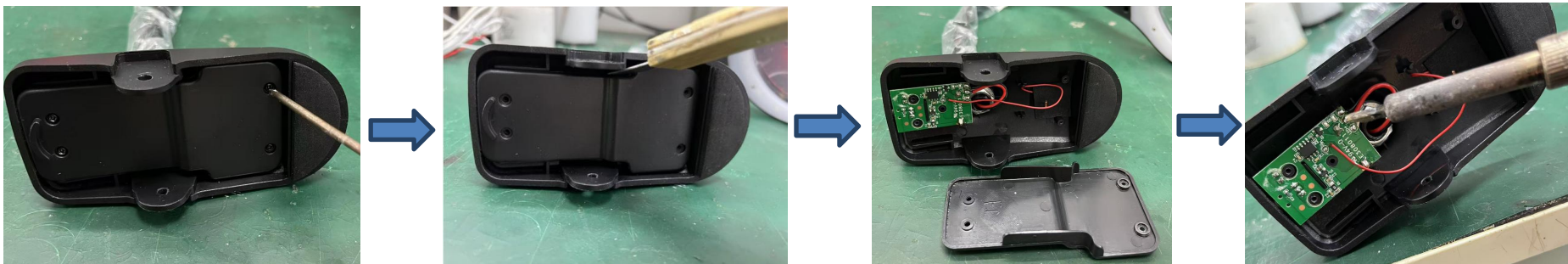
Instructions on how to remove the light source:

Note: Please operate following steps when the product is powered off.

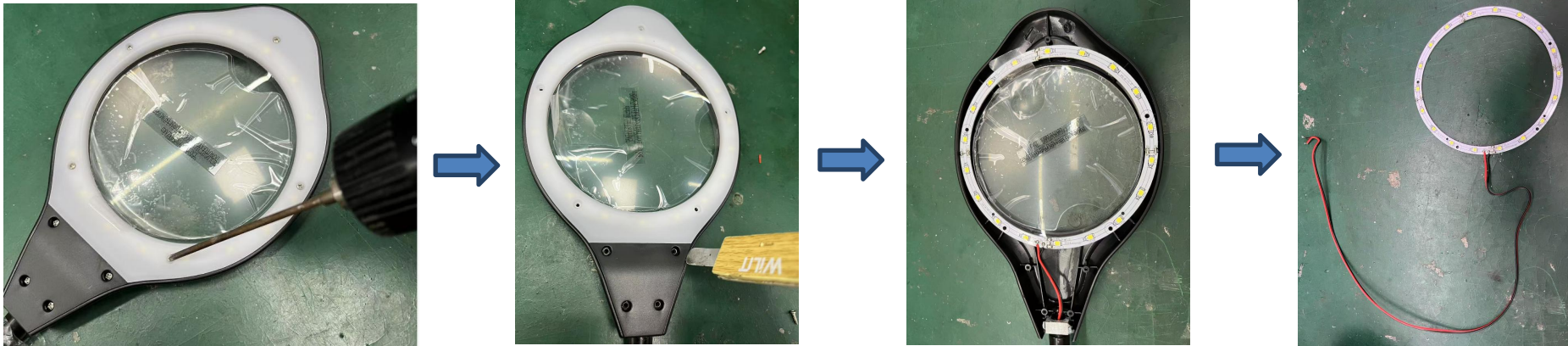
Step1: First, use pliers to grip one end of the clamp and fix the nut in place. Then, use an electric screwdriver to remove the screw from the other end of the clamp, open the clamp.



Step2: Use an electric screwdriver to remove the four screws inside the base. Use a pry piece to open the bottom cover, revealing the motherboard inside. Then, use a soldering iron to remove the black & red wires.



Step3: Use an electric screwdriver to remove the five screws on the lamp head. Use a pry piece to open the plastic cover of the lamp head, exposing the inner lamp board. Then pick up the lamp board along with the connecting wires and pull it out.



Step4: Now the light source was removed without being permanently damaged for verification purposes.



Red line: Positive pole “ + ”
Black line: Negative pole “ - ”