

Product details:

Item No.: 844756

Model No.: UL-U30CS

Technical data:

Input: 5V/1A

CCT: $5000 \pm 280\text{K}$ / $190 \pm 30\text{Lm}$; $4000 \pm 400\text{K}$ / $165 \pm 30\text{Lm}$; $3000 \pm 280\text{K}$ / $165 \pm 30\text{Lm}$

Lighting power: $3.7 \pm 1\text{W}(\text{Max})$

CRI: $>80\text{Ra}$

Tools list:



1. Tweezer
2. Pry piece
3. Electric screwdriver
4. Soldering iron

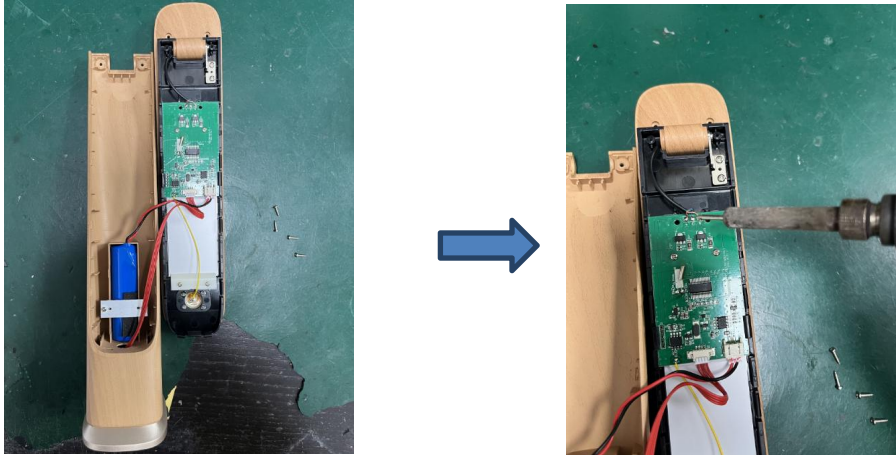
Instructions on how to remove the light source:

Note: Please operate following steps when the product is powered off.

Step1: Use an electric screwdriver to remove the two screws on the back of the lamp body and the two screws on the back of the lamp head. Then, using a pry piece open the lamp body along the gap



Step2: Use a soldering iron to remove the three connecting wires.



Step3: Use a pry piece to open the gap of the plastic cover of the lamp head, exposing the inner lamp board. Then, use an electric screwdriver to remove the screws on the lamp board, and then use tweezers to pick up the lamp board along with the connecting wires and pull it out.



Step4: Now the light source was removed without being permanently damaged for verification purposes.



Red line: Positive pole “ + ”

Golden line & blue line: Negative pole “-”