

Product details:

Item No.: 844750

Model No.: F18F

Technical data:

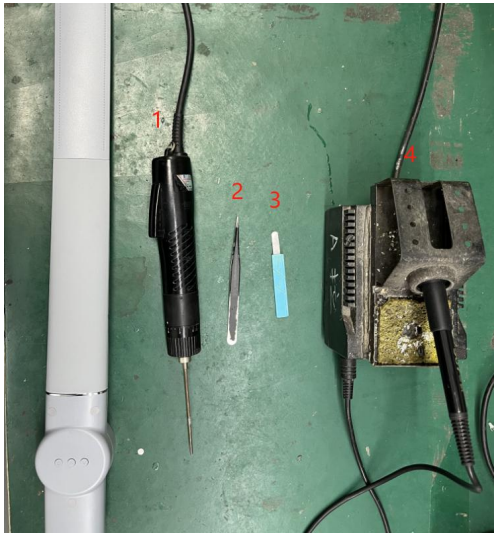
Input:12V/1A

CCT & Luminous flux: 5000 \pm 285K / 450Lm \pm 15%; 4500 \pm 285K / 400Lm \pm 15%; 4000 \pm 285K / 400Lm \pm 15%; 3500 \pm 285K / 400Lm \pm 15%; 3000 \pm 285K / 450Lm \pm 15%

Lighting power: 8.5W \pm 2W(Max)

CRI: >80Ra

Tools list:



- 1.Electric screwdriver
- 2.Tweezer
- 3.Pry piece
- 4.Soldering iron

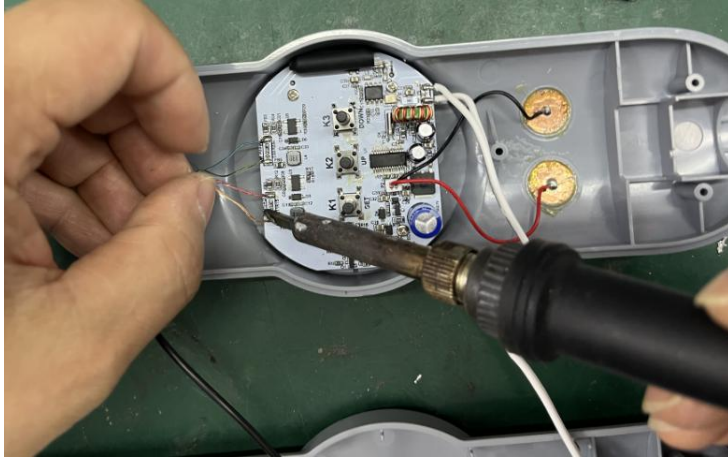
Instructions on how to remove the light source:

Note:Please operate following steps when the product is powered off.

Step1: Use tweezer to remove the stickers on the two screw holes on the back of the lamp, and then use an electric screwdriver to take out the 5 screws inside.



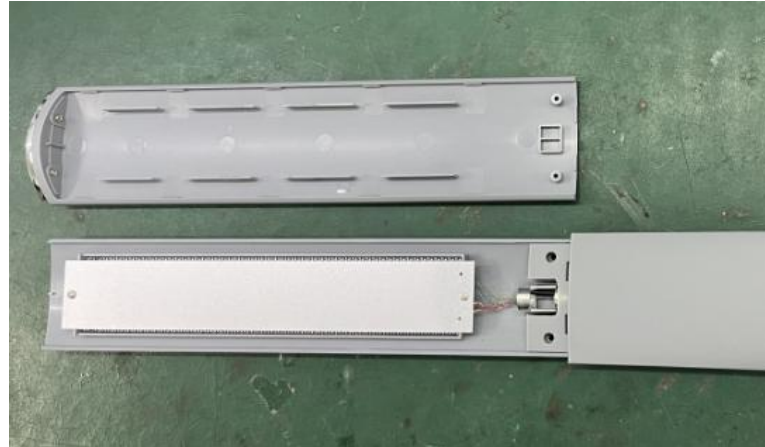
Step2: Open the plastic shell and remove the wires on the board using a soldering iron.



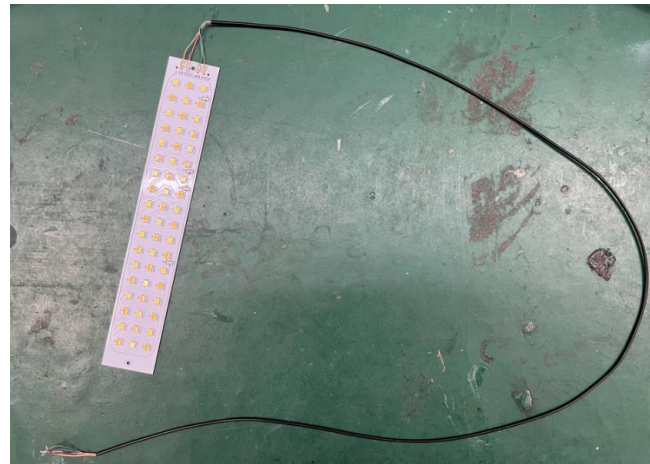
Step3: Use the tweezer to remove the stickers on the two screw holes on the lamp head, and then use the electric screwdriver to take out the screws inside.



Step4: Use the pry piece to open the plastic cover of the lamp head along the edge gap.



Step5: Use an electric screwdriver to remove the two screws on the lamp board, and then take out the lamp board along with the connecting wire.



Step6: Now the light source was removed without being permanently damaged for verification purposes.



Red line & blue line: Positive pole “ + ”

Golden line & green line: Negative pole “-”