

Product details:

Item No.: 744422

Model No.: C13T

Technical data:

Input: 5V/2A

CCT: $3000 \pm 280\text{K}$ / $4200\text{K} \pm 400\text{K}$ / $5000 \pm 280\text{K}$

Luminous flux: 350Lm-450Lm

Lighting power: $9\text{W} \pm 1\text{W}$

CRI: $>80\text{Ra}$

Tools list:

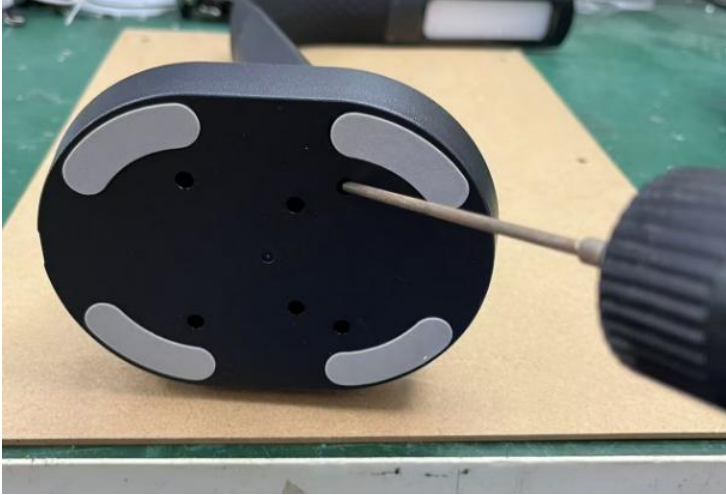


1. Tweezer
2. Pry piece
3. Electric screwdriver
4. Soldering iron

Instructions on how to remove the light source:

Note: Please operate following steps when the product is powered off.

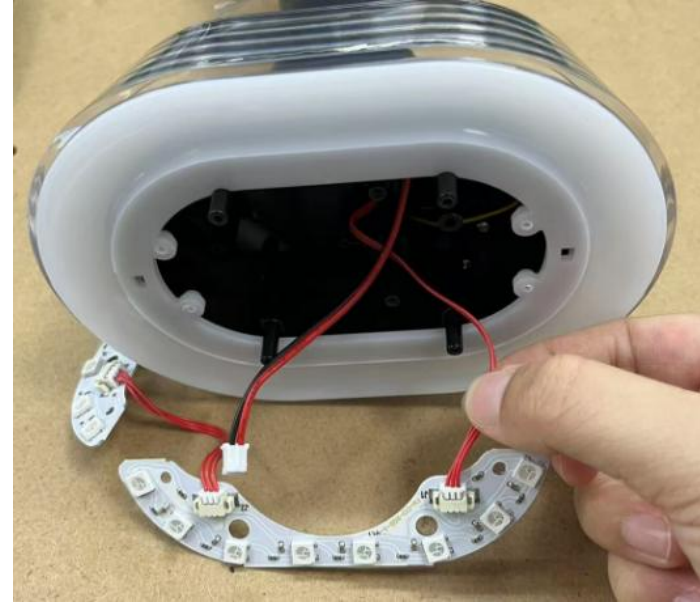
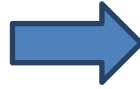
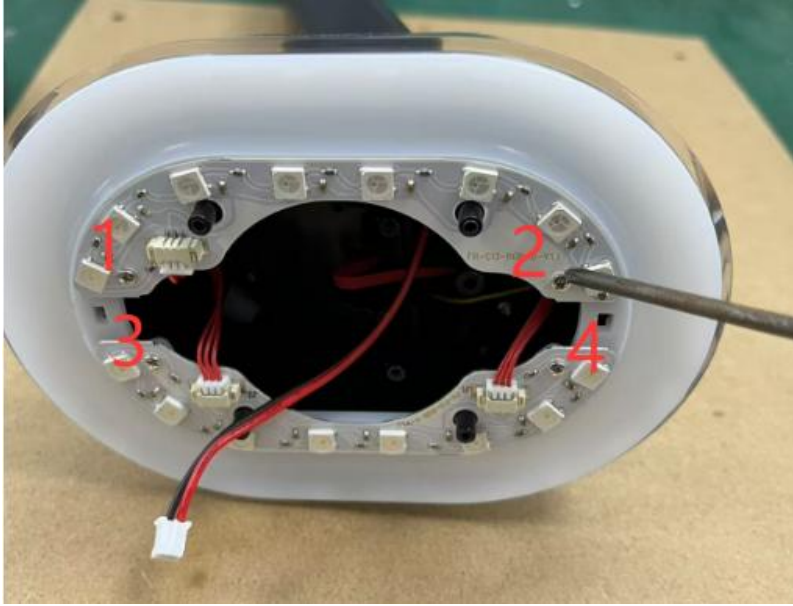
Step1: Remove the bottom 6 screws with electric screwdriver.



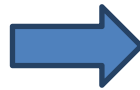
Step2: Open the bottom plastic shell and remove this connector.



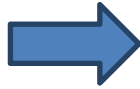
Step3: Remove the 4 screws with electric screwdriver and remove the connector.



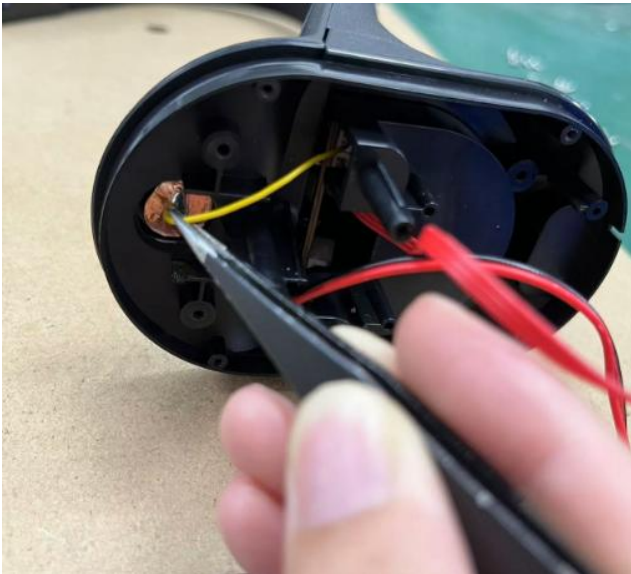
Step4: Remove the plastic cover.



Step5: Remove all the screws inside with electric screwdriver and remove the plastic cover.



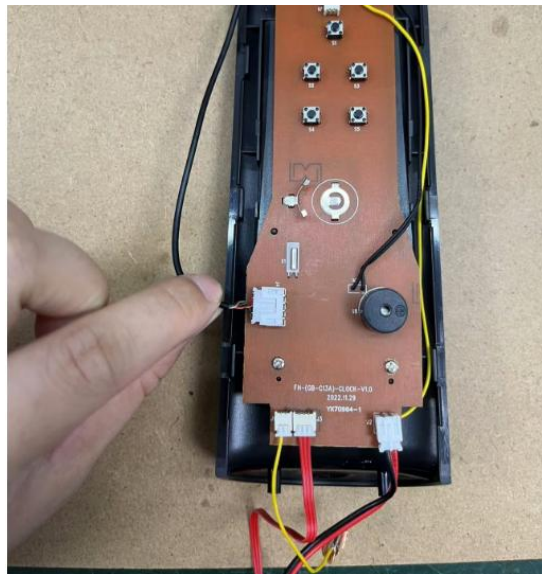
Step6: Use the tweezer to remove this wire.



Step7: Use a screwdriver to remove the two screws behind the lamp. Then, use the pry piece to gently push along the edge gap to remove the plastic shell snap fastener.



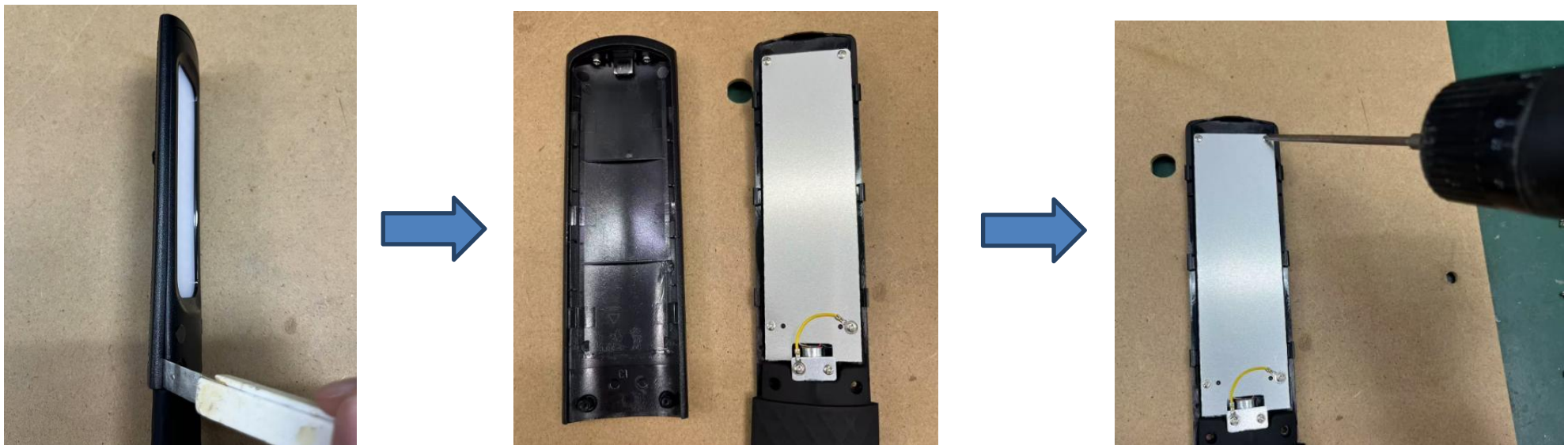
Step8: Remove this connector and remove the 2 screws with electric screwdriver.



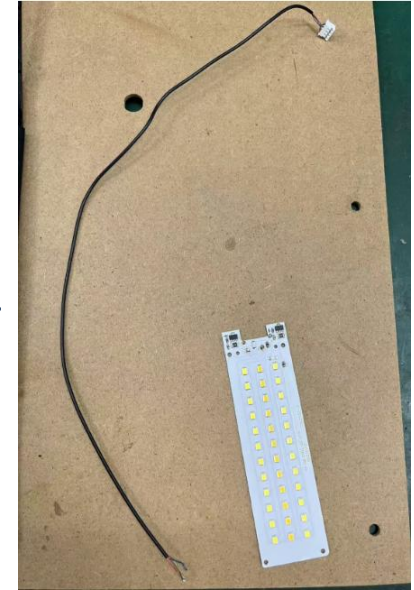
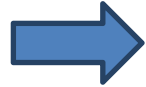
Step9: Use tweezer to remove the plastic screws stickers and then use an electric screwdriver to take screws off.



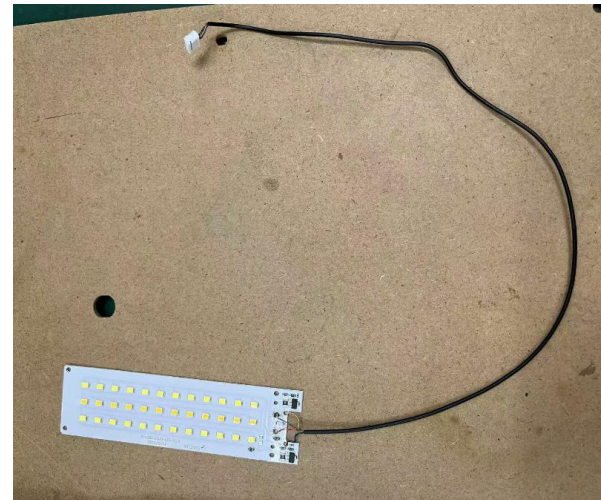
Step10: Use the pry piece to gently push along the edge gap to remove the plastic shell snap fastener. Then remove all the screws on the lamp board.



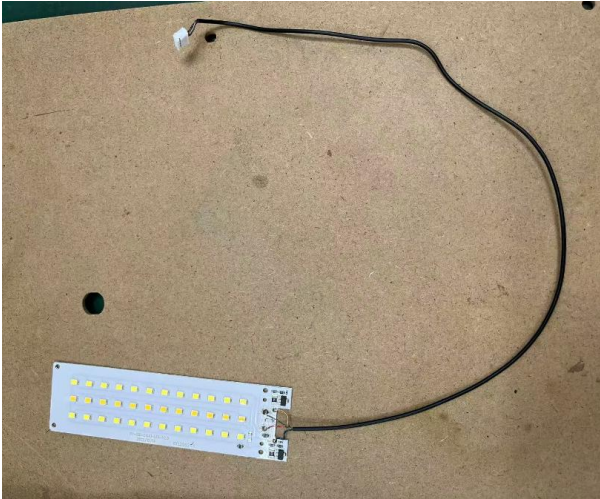
Step11: Remove the lamp board, then use a soldering iron to separate the wire from the lamp board, and then pull the wire out from beneath the lamp.



Step12: Use the soldering iron to connect the wires to the lamp board in the original sequence and position.



Step13: Now the light source was removed without being permanently damaged for verification purposes.



Red line & blue line: Positive pole “ + ”

Golden line & Green line: Negative pole “-”