

Product details:

Item No.: 844752

Model No.: GT2

Technical data:

Input: 24V/0.75A

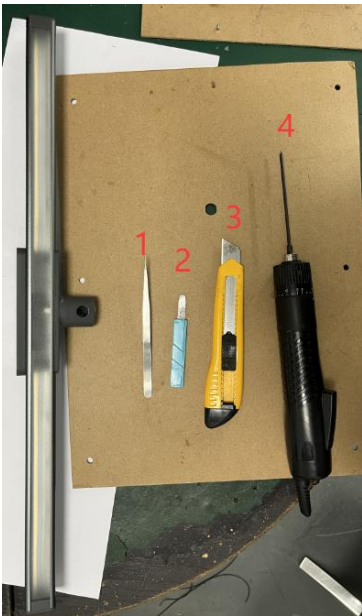
CCT: 3045 \pm 175K/4200 \pm 267K/5300 \pm 332K/6000 \pm 410K

Luminous flux: 160-935Lm

Lighting power: 15W \pm 2W (MAX)

CRI: >80Ra

Tools list:

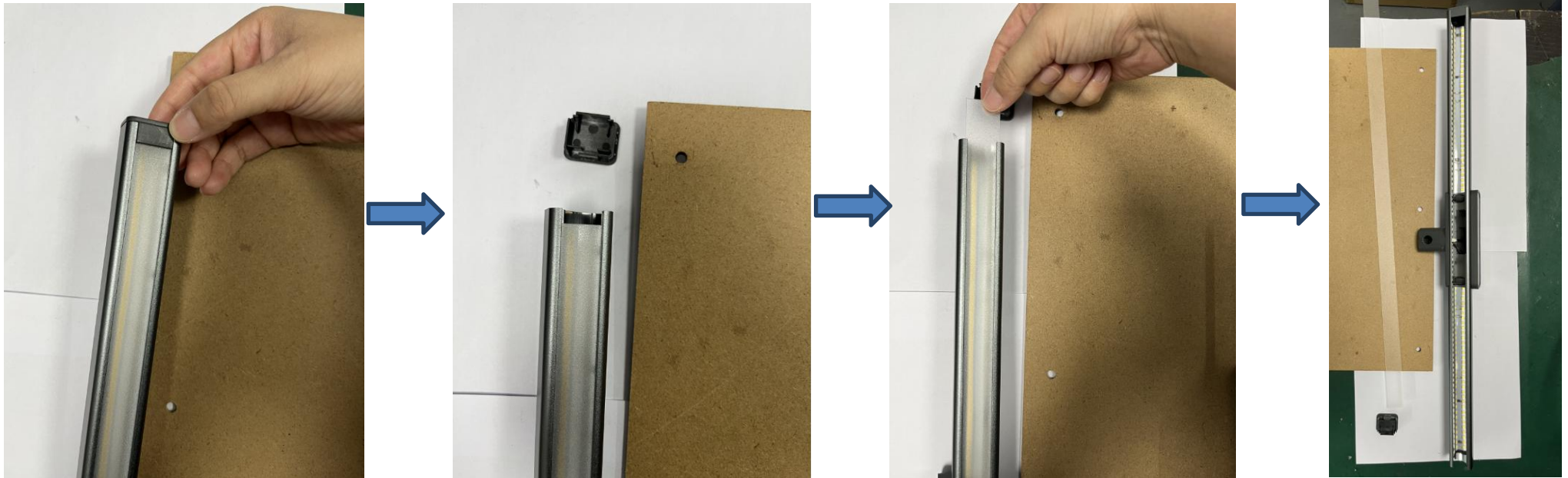


1. Tweezer
2. Pry piece
3. Knife
4. Electric screwdriver

Instructions on how to remove the light source:

Note: Please operate following steps when the product is powered off.

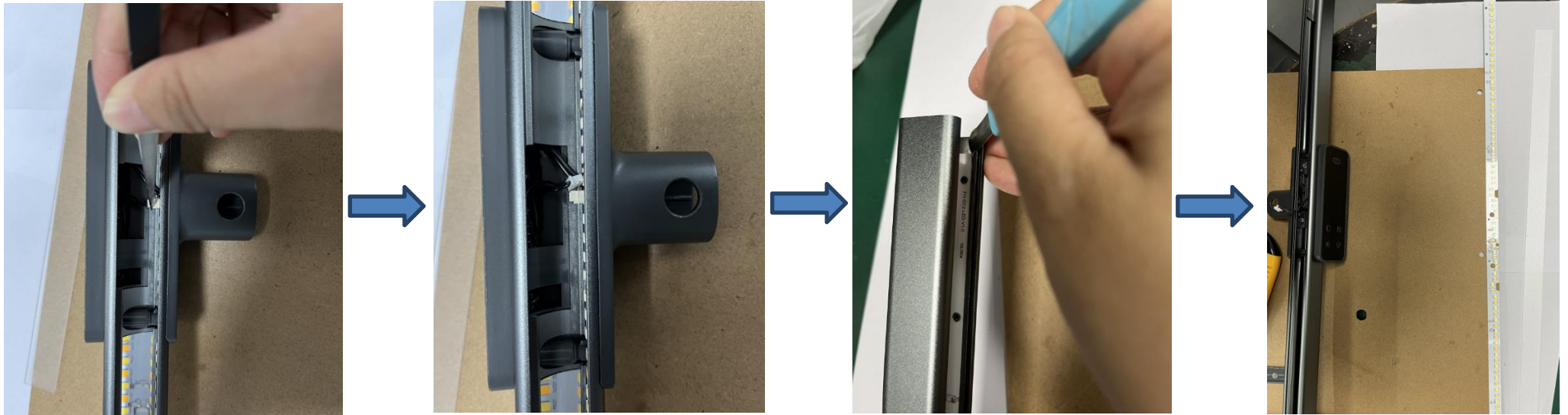
Step1: Remove the plastic cover on the side of the lamp head, and then remove the lampshade from one end.



Step2: Use a knife to remove the six plastic clips on the lamp board.



Step3: Remove the plug of this wire, and then use the pry piece to remove the lamp panel by inserting it into the gap of the lamp board.



Step4: Use a knife to lift the lens along the gap of the display lens and then remove the lens. Then, use an electric screwdriver to remove the screws inside.



Step5: Use the wedge-shaped tool to push the plastic shell out along the gap at the edge of the plastic cover, revealing the internal control board.



Step6: Remove the plugs from the wires on the control board and insert the other end of the plugs into the lamp board.



Step7: Now the light source was removed without being permanently damaged for verification purposes.

