

Product details:

Item No.: 844753

Model No.: W25

Technical data:

Input: 12V/1.5A

CCT: 4200K \pm 400

Luminous flux: 280Lm \pm 50

Power of light: 5W \pm 10%

CRI: >80Ra

Tools list:



1. Soldering iron
2. Electric screwdriver
3. Tweezer

Instructions on how to remove the light source:

Note: Please operate following steps when the product is powered off.

Step1: Remove the bottom sponges and then remove the bottom screws with electric screwdriver.



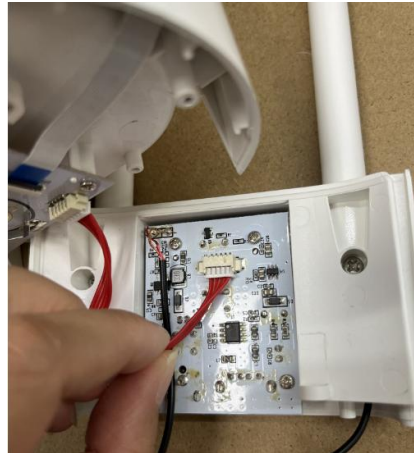
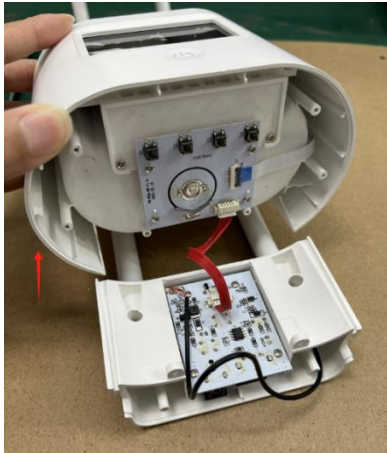
Step2: Open the bottom plastic shell.



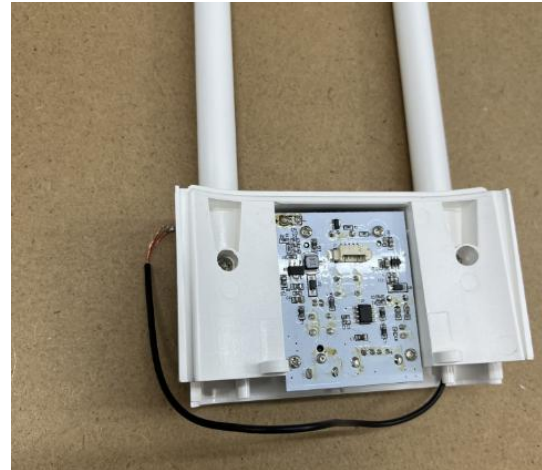
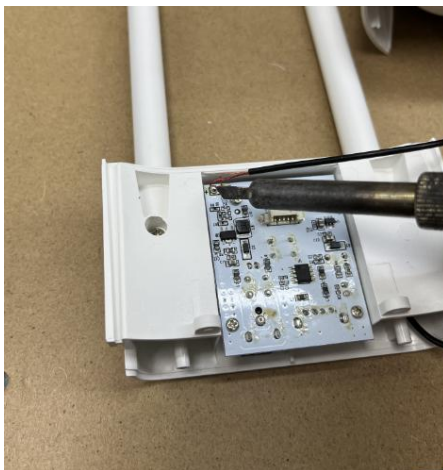
Step3: Remove the screws at the joint of the two parts of the plastic shell with electric screwdriver.



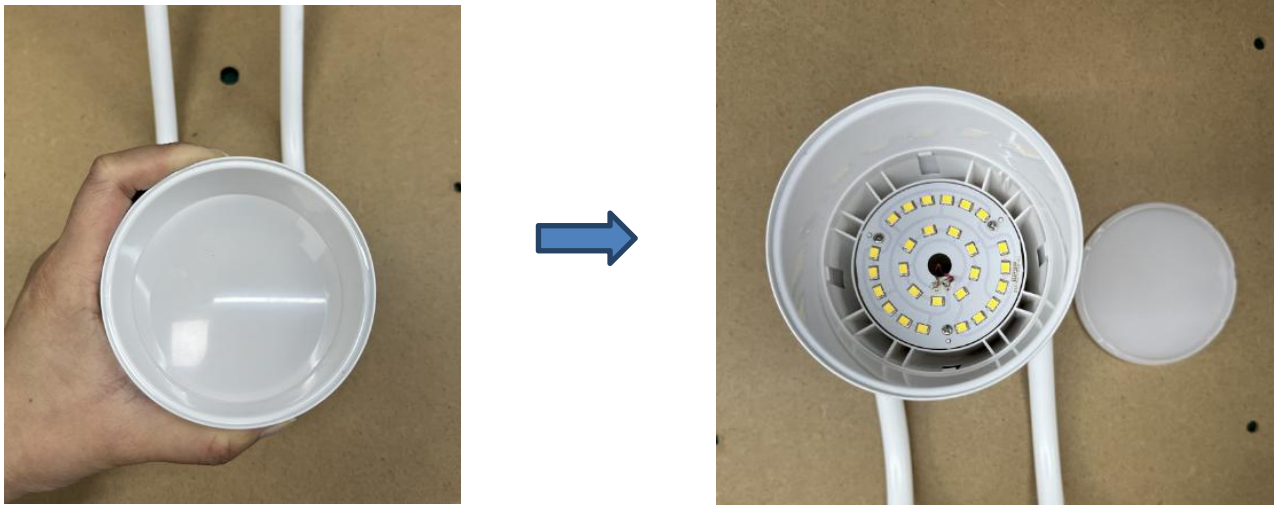
Step4: Slide the front plastic case up to expose the power board and remove the terminal of the cable.



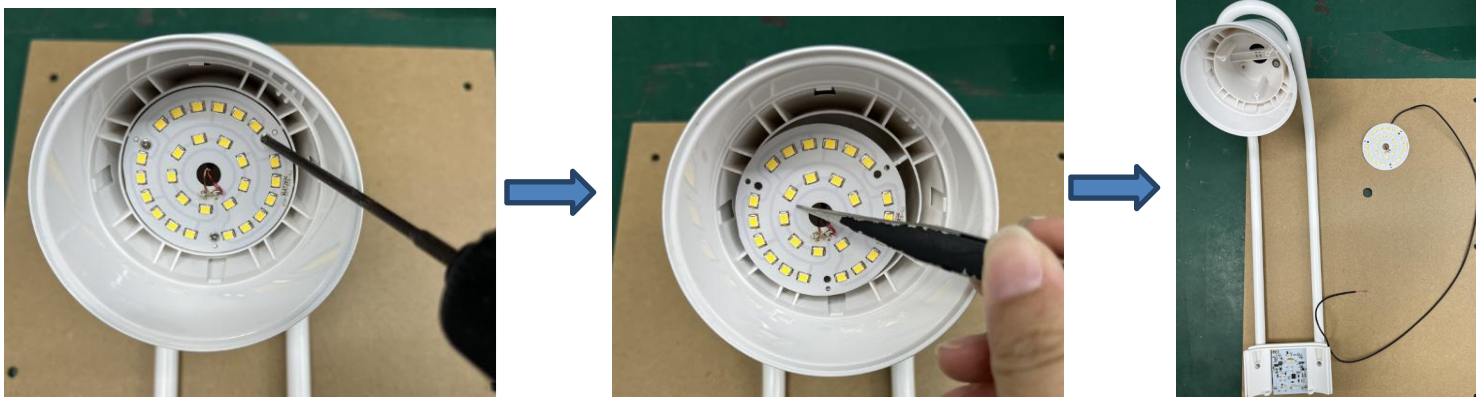
Step4: Use soldering iron to remove the wires from the board.



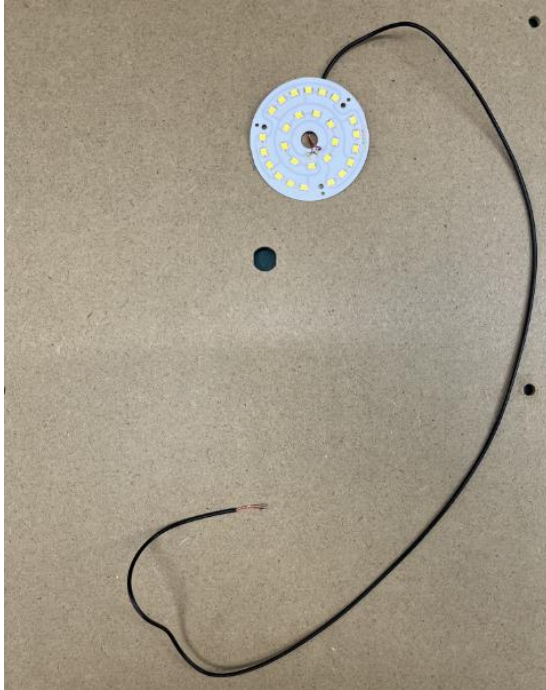
Step5: Squeeze the lamp holder firmly, pop the hood out, and then remove the hood.



Step6: Use electric screwdriver to remove the screws on the light board, then pick up the light board with tweezers, and pull out the connection wire from the lamp pole.



Step7: Now the light source was removed without being permanently damaged for verification purposes.



Red line: Positive pole “ + ”
Golden line: Negative pole “-”