

Product details:

Item No.: 844527

Model No.: QU11

Technical data:

Input: 12V/1.5A

CCT: 3000 \pm 280K/4000 \pm 280K/5000 \pm 280K

Luminous flux: 150 \pm 50Lm

Lighting power: 4.5W \pm 0.5W Max.

CRI: >80Ra

Tools list:

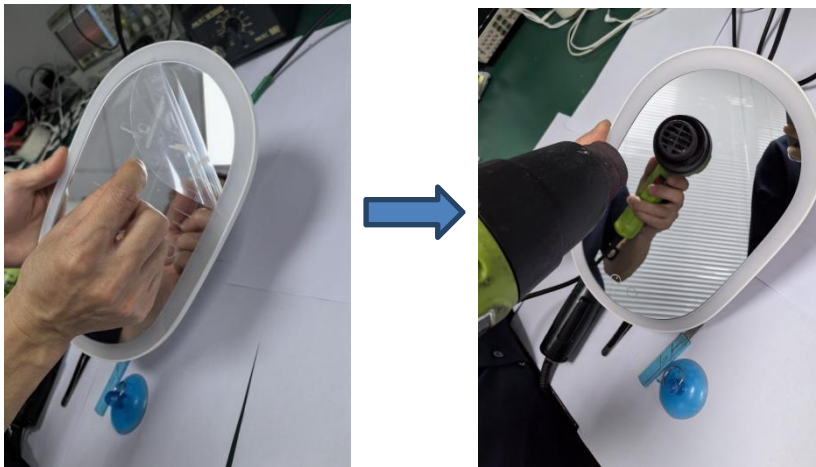


- 1.Soldering iron
- 2.Heat gun
- 3.Electric screwdriver
- 5.Pry piece
- 6.Suction cup

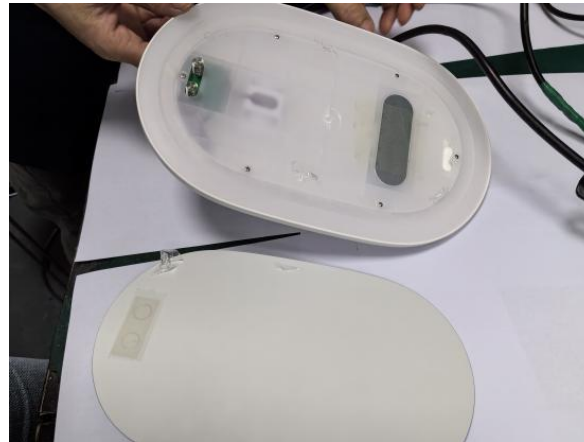
Instructions on how to remove the light source:

Note:Please operate following steps when the product is powered off.

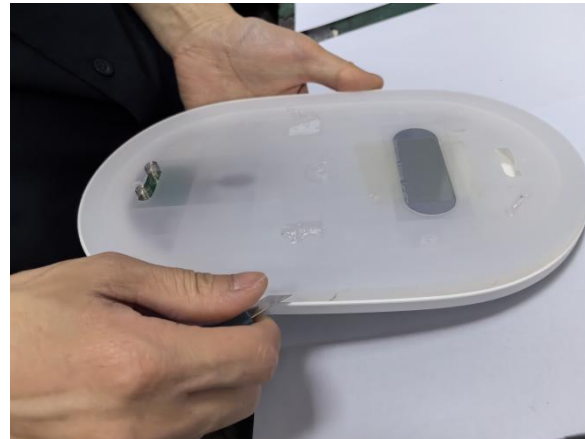
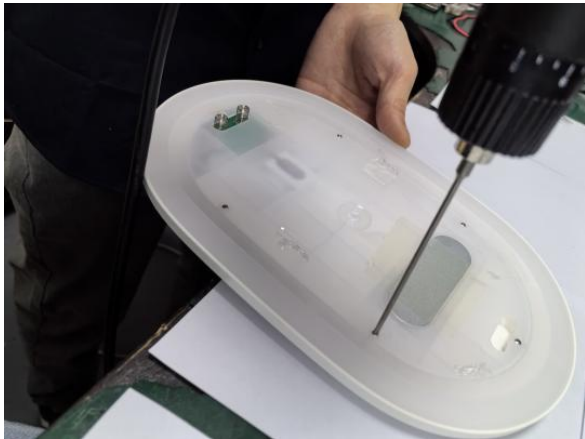
Step1: Remove the lens protective film and use heat gun to blow heat around the edges of the lens.

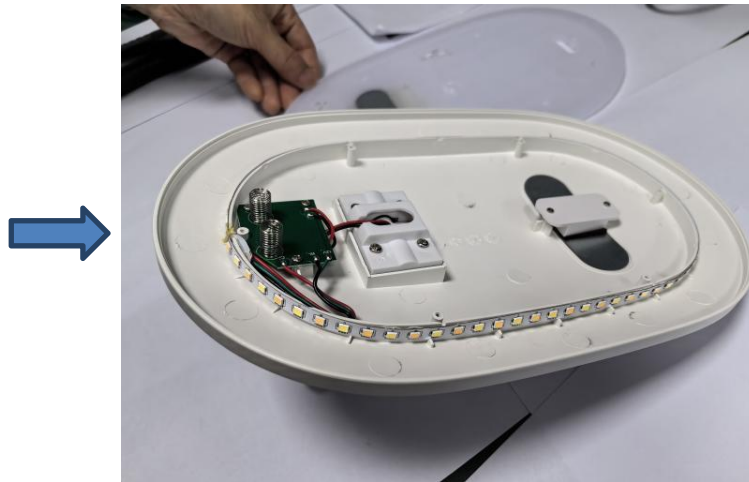
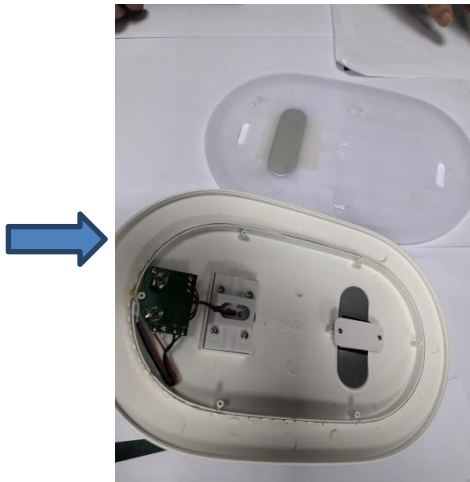


Step2: Use the suction cup to hold the lens and pull it down forcefully.

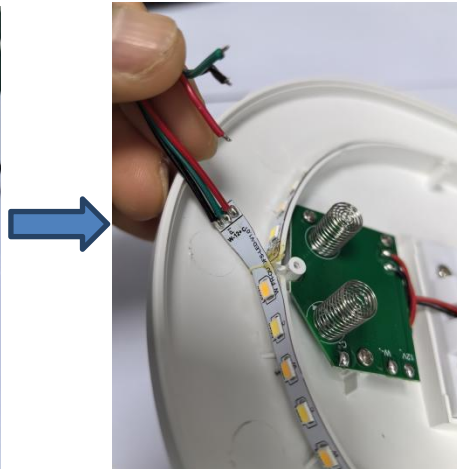


Step3: Use the electric screwdriver to remove the screws of lamp head and then use the pry piece to pry the case open.

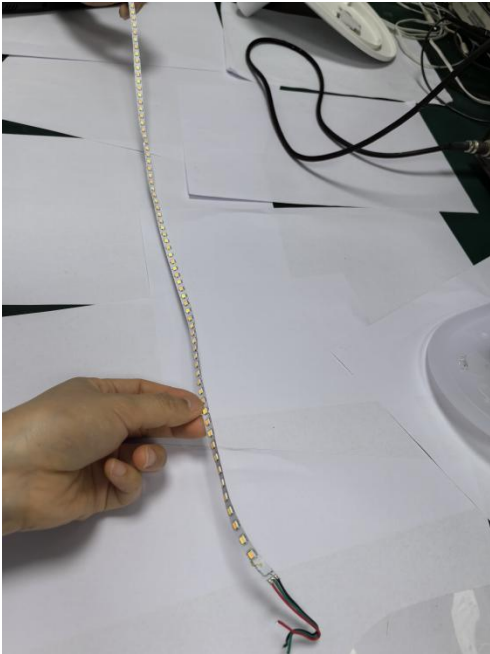




Step4: Use a soldering iron to remove the connecting wires from the board and tear off the lamp strip.



Step5: Now the light source was removed without being permanently damaged for verification purposes.



Red line: "C-"
Green line: "12+"
Black line: "W-"