

Product details:

Item No.: 844493

Model No.: AJ300

Technical data:

Input: 12V/1A

CCT: 4000±250K

Luminous flux: around 150Lm

Lighting power: around 4W

CRI: >80Ra

Tools list:

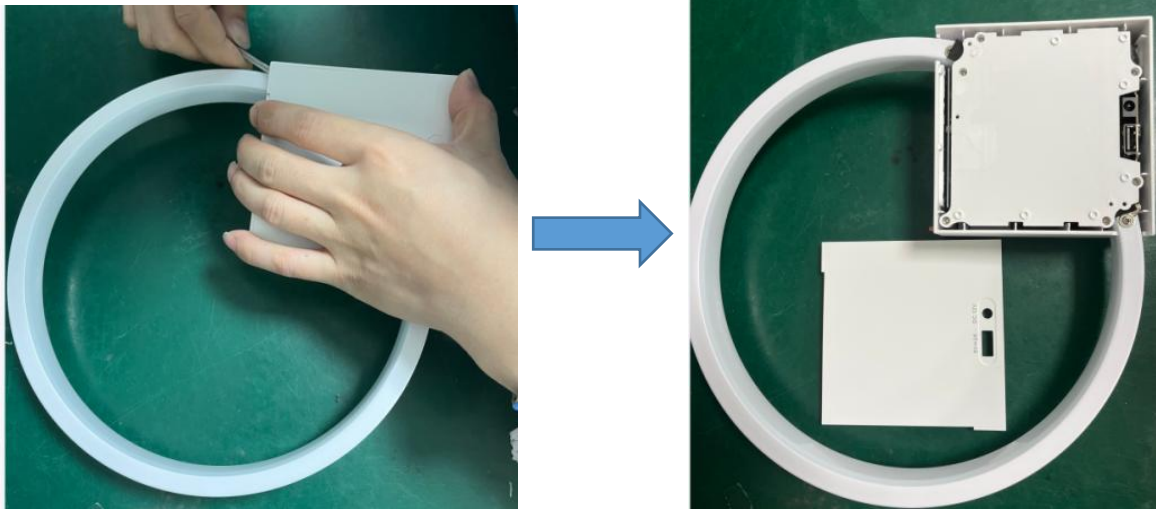


- 1: Tweezer
- 2: Utility knife
- 3: Electric screwdriver

Instructions on how to remove the light source:

Note: Please operate following steps when the product is powered off.

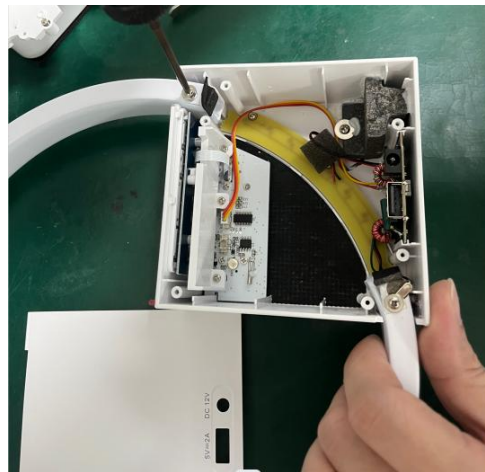
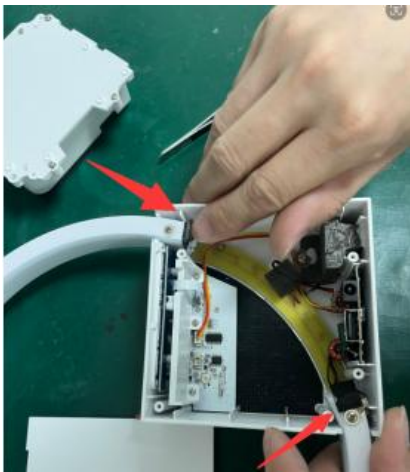
Step1: Remove the back shell with tweezers.



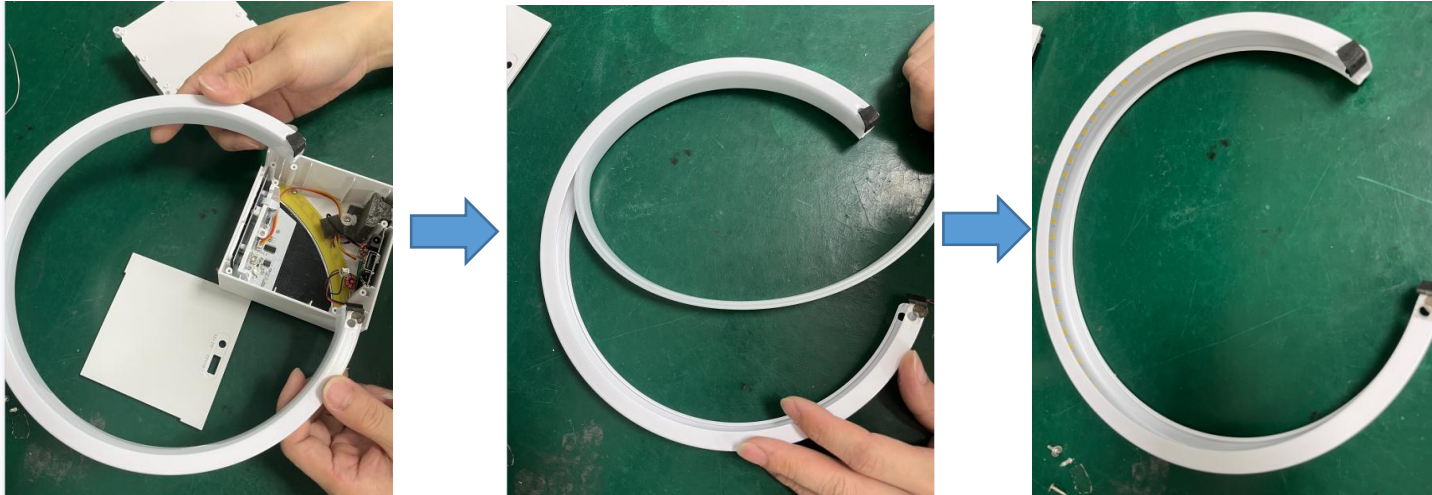
Step2: Remove the screws from the board with electric screwdriver.



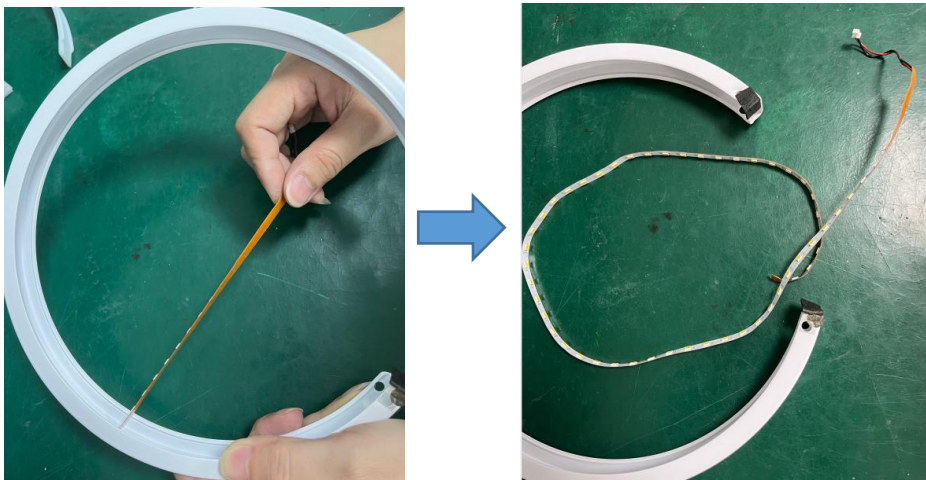
Step3: Remove the two of screw holes EVA by hand, and then remove the screws of lamp head by electric screwdriver.



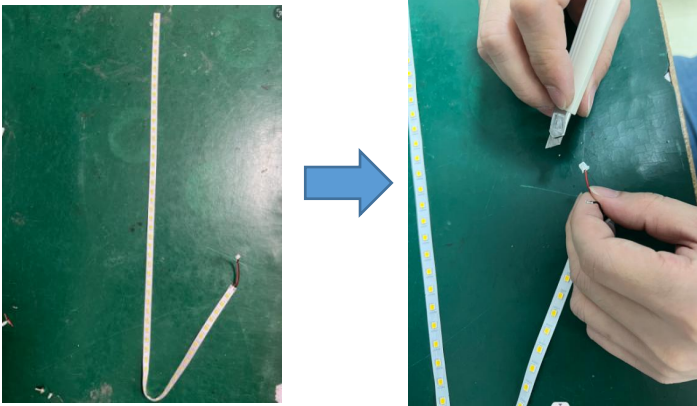
Step4: Then the light pole came out, and then remove the lampshade by hand.



Step5: Use hand to tear off the lamp strip.



Step6: Use utility knife to raise the wire casing.



Step7: Now the light source was removed without being permanently damaged for verification purposes.



Red line: Positive pole “ + ”
Black line: Negative pole “ - ”