

Product details:

Item No.: 844492

Model No.: A11CAM

Technical data:

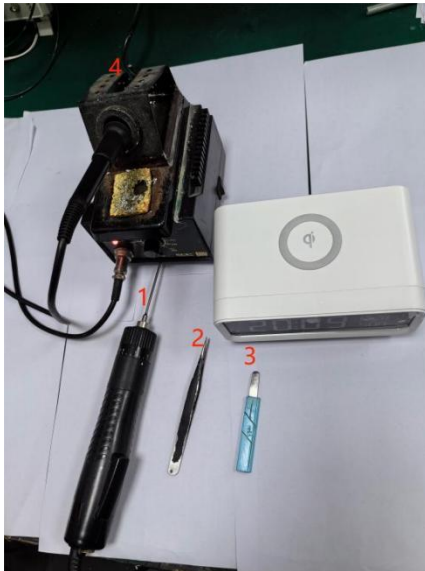
Input:12V/1A

CCT of night light: 2600-3400K

Luminous flux of night light: <60Lm

Power of night light: around 2.5W

Tools list:

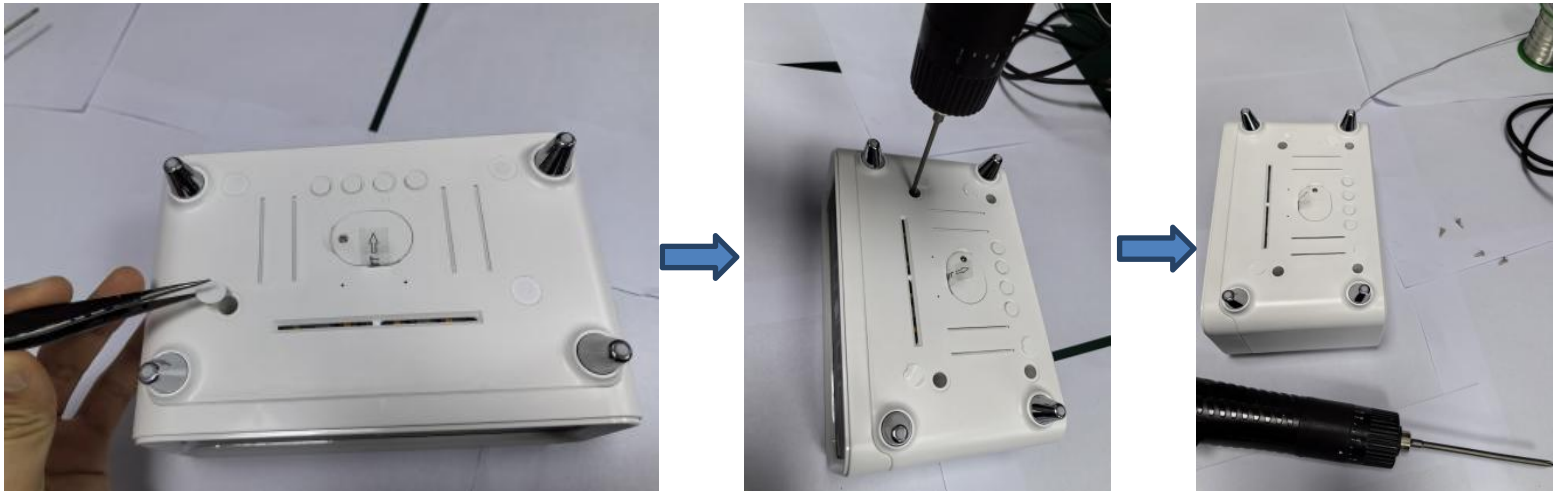


1. Electric screwdriver
2. Tweezer
3. Pry piece
4. Soldering iron

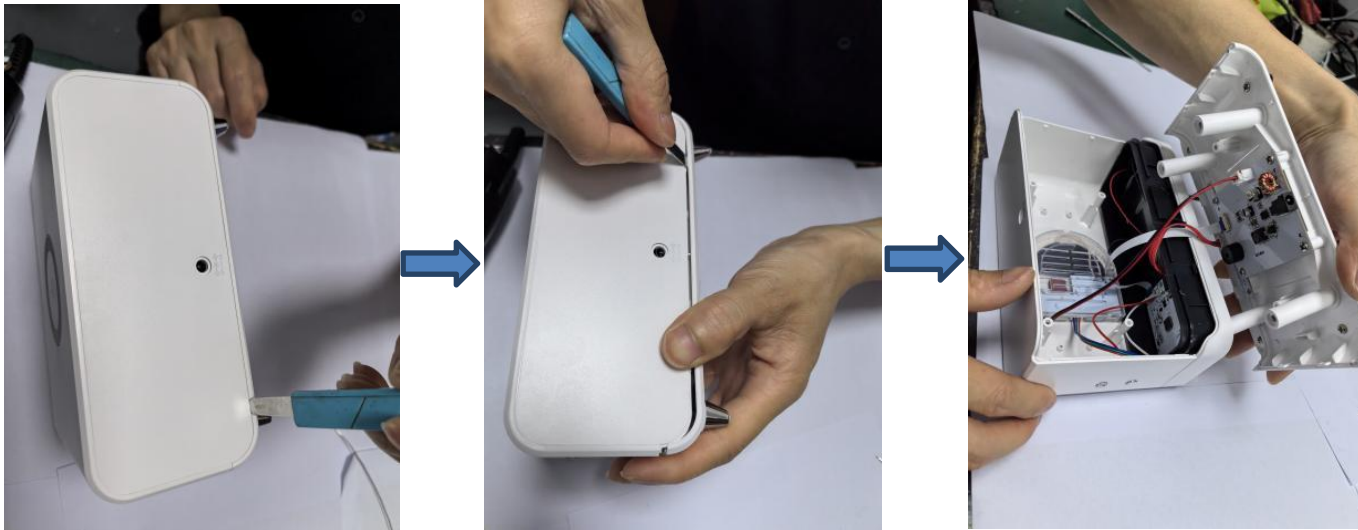
Instructions on how to remove the light source:

Note: Please operate following steps when the product is powered off.

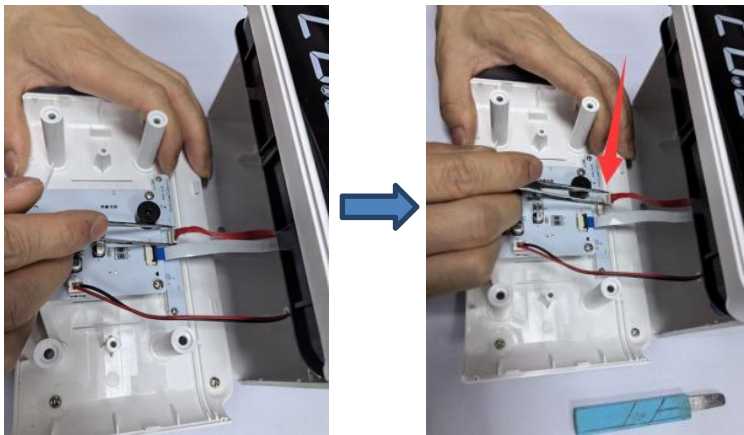
Step1: After picking up the bottom four spacers with tweezers, and then remove the screws with electric screwdriver.



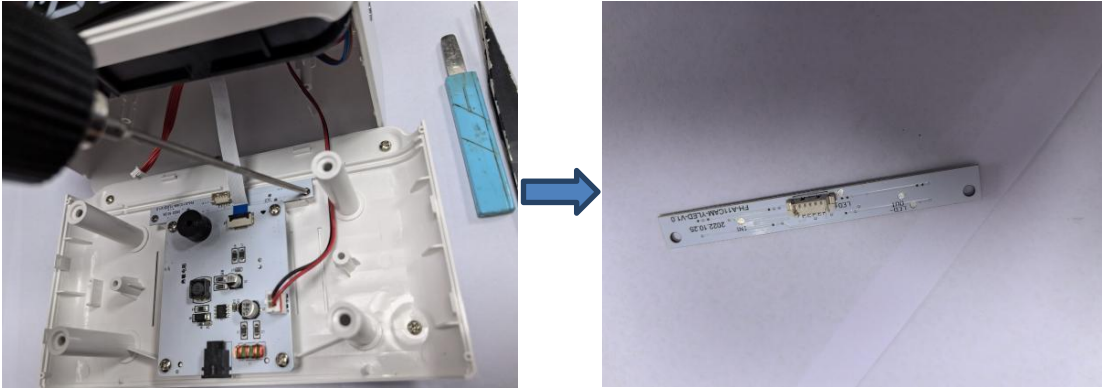
Step2: Use pry piece to pry open with the buckle along the fuselage gap.



Step3: Use tweezers to pull out the connector terminals from the light board



Step4: Use electric screwdriver to remove the screws on the light board.



Step5: Now the light source was removed without being permanently damaged for verification purposes.

