

Product details:

Item No.: 844490

Model No.: X15

Technical data:

Input: 12V/1A

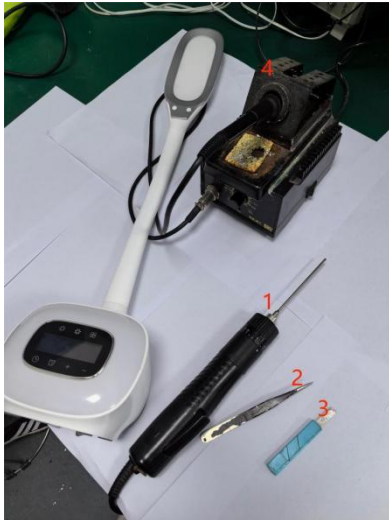
CCT: 4000±250K

Luminous flux: 400-550Lm

Lighting power: 6.5W ± 10%

CRI: >80Ra

Tools list:

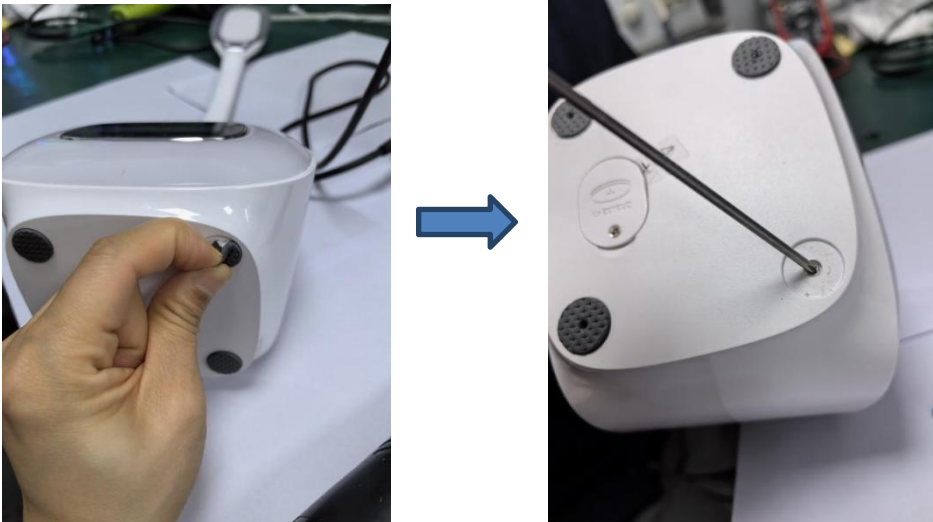


1. Electric screwdriver
2. Tweezer
3. Pry piece
4. Soldering iron

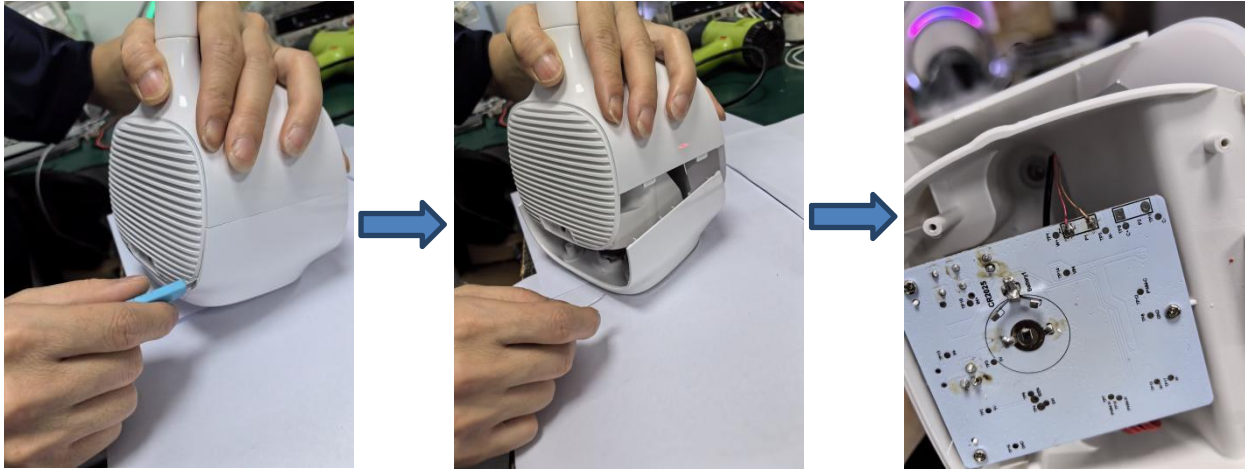
Instructions on how to remove the light source:

Note: Please operate following steps when the product is powered off.

Step1: Remove the bottom four sponges and then remove the bottom screws with electric screwdriver.



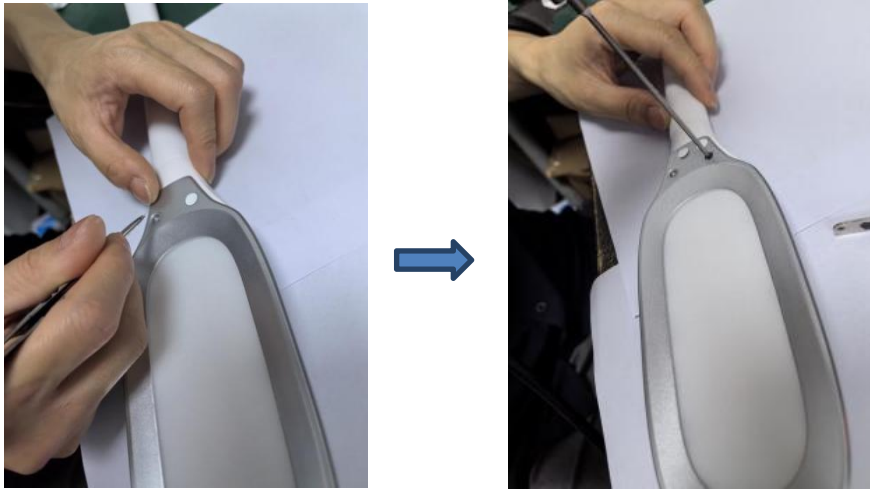
Step2: Use pry piece to pry open along the rear side gap buckle of the fuselage to expose the bottom board.



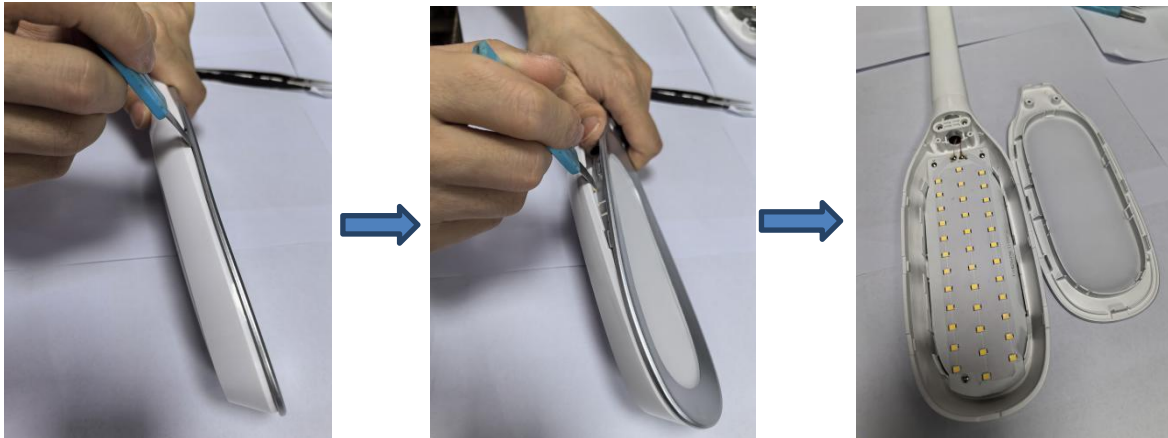
Step3: Use soldering iron to remove the wires from the board.



Step4: Use tweezers to pick up the gasket of the lamp head, and then use electric screwdriver to remove the screws of the lamp head.



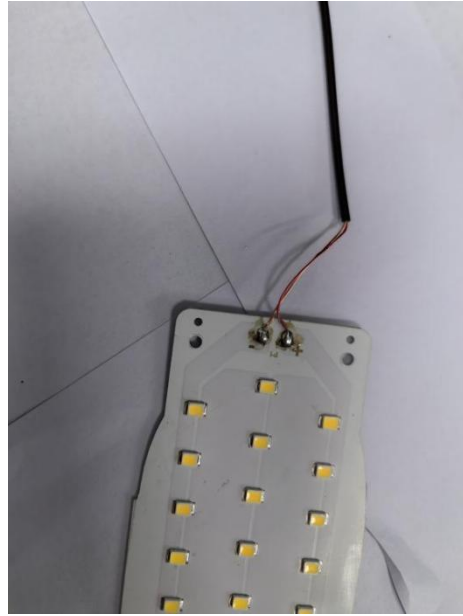
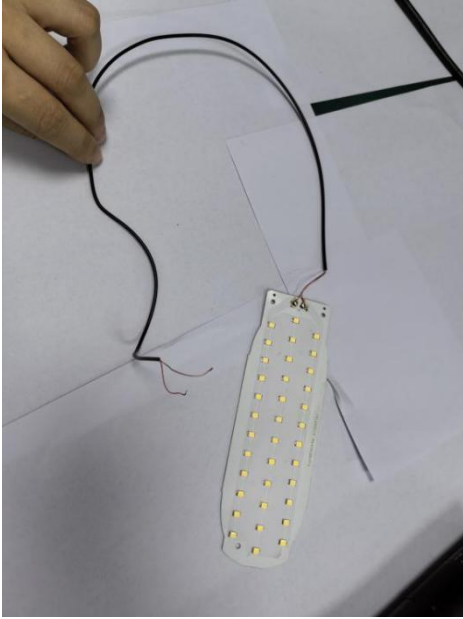
Step5: Use pry piece to pry open along the gap snap of the lamp head.



Step6: Use electric screwdriver to remove the screws on the light board, then pick up the light board with tweezers, and pull out the connection wire from the lamp pole.



Step7: Now the light source was removed without being permanently damaged for verification purposes.



Red line: Positive pole “ + ”
Golden line: Negative pole “ - ”