

Product details:

Item No.: 825676

Model No.: MK1

Technical data:

Input: 12V/2.5A

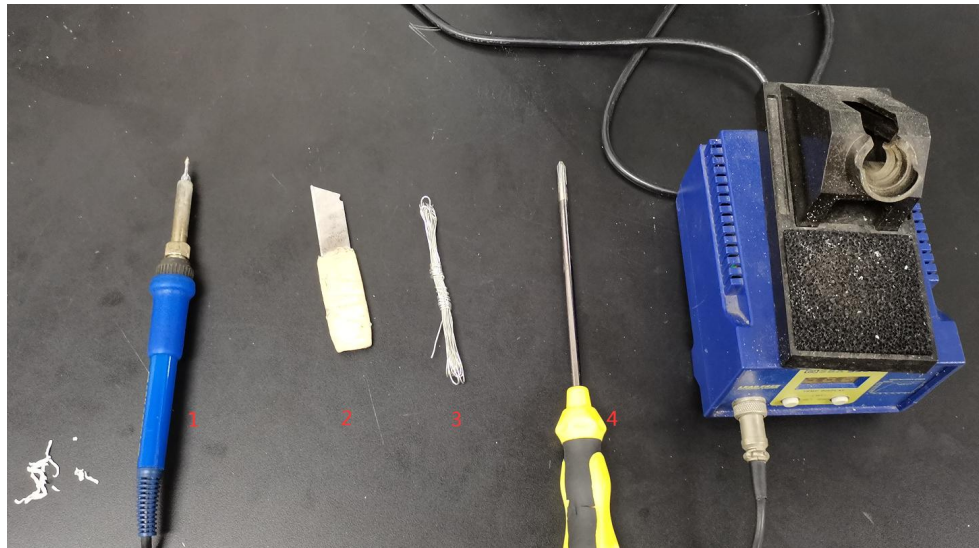
CCT: 5000K

Luminous flux: 600Lm Max.

Lighting power: 6.7W Max.

CRI: 80Ra

Tools list:

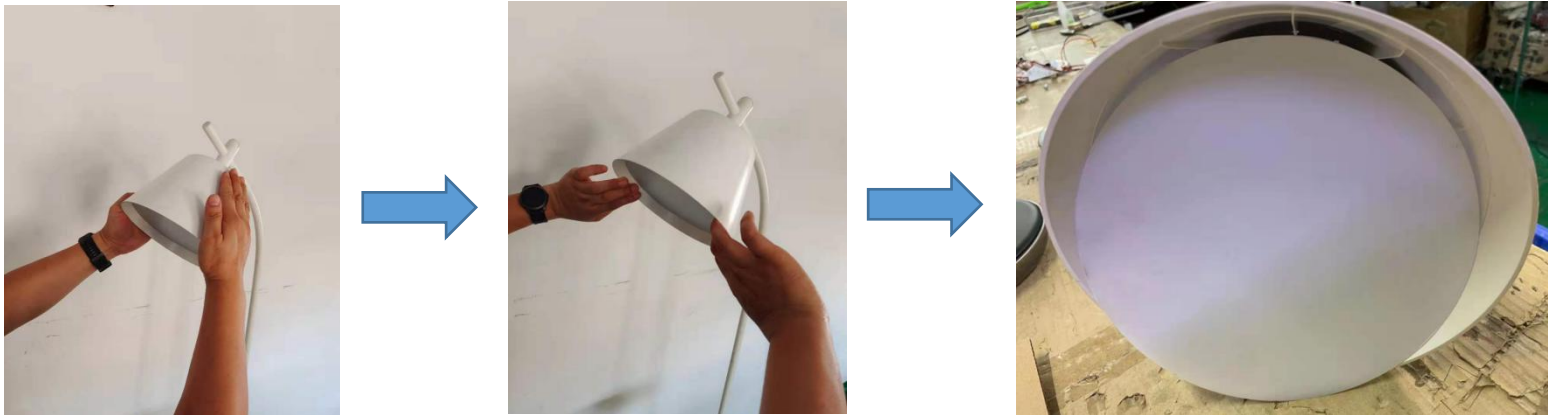


- 1: Soldering iron
- 2: Blade
- 3: Solder wire
- 4: Screwdriver(PH1x150mm)

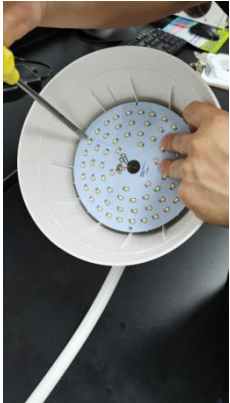
Instructions on how to remove the light source:

Note: Please operate following steps when the product is powered off.

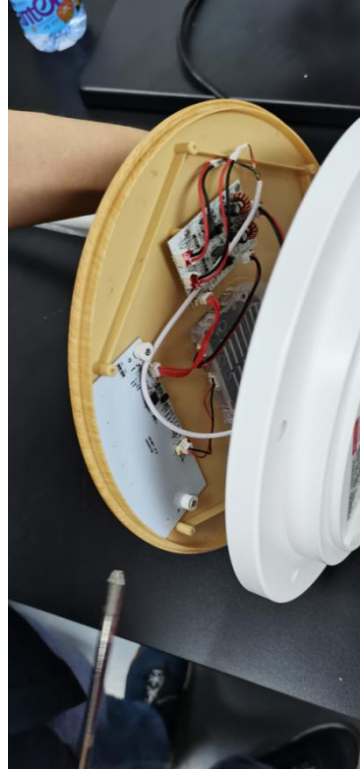
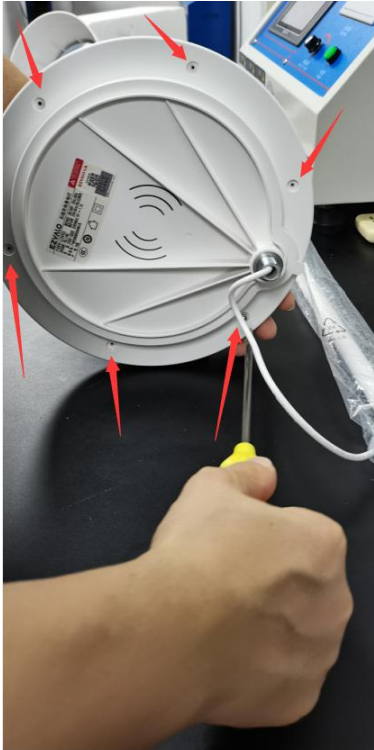
Step1: Extrude the shell of lamp holder with the hand, then break the shell of lamp holder open slightly with the hand, make the shell and lampshade have slight aperture, to make lampshade detached.



Step2: Remove the 3 screws with the screwdriver(PH1x150mm).



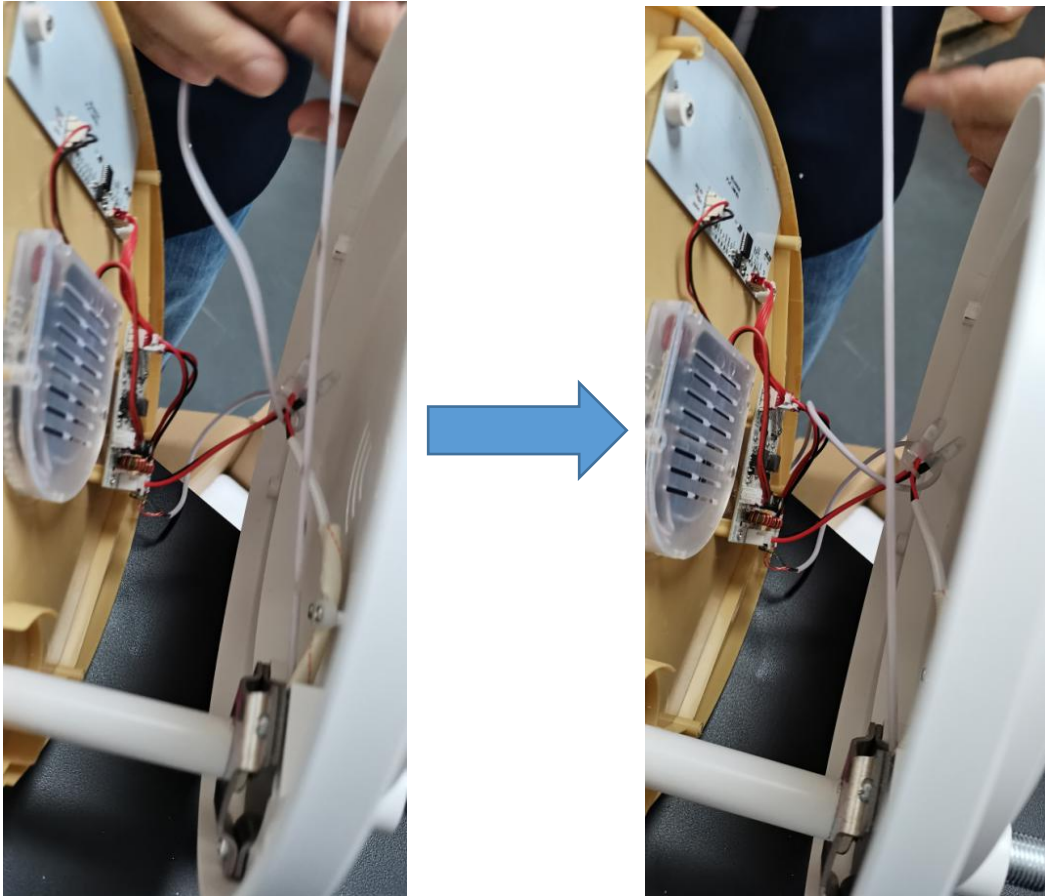
Step3: Remove the 6 screws with the screwdriver(PH1x150mm).



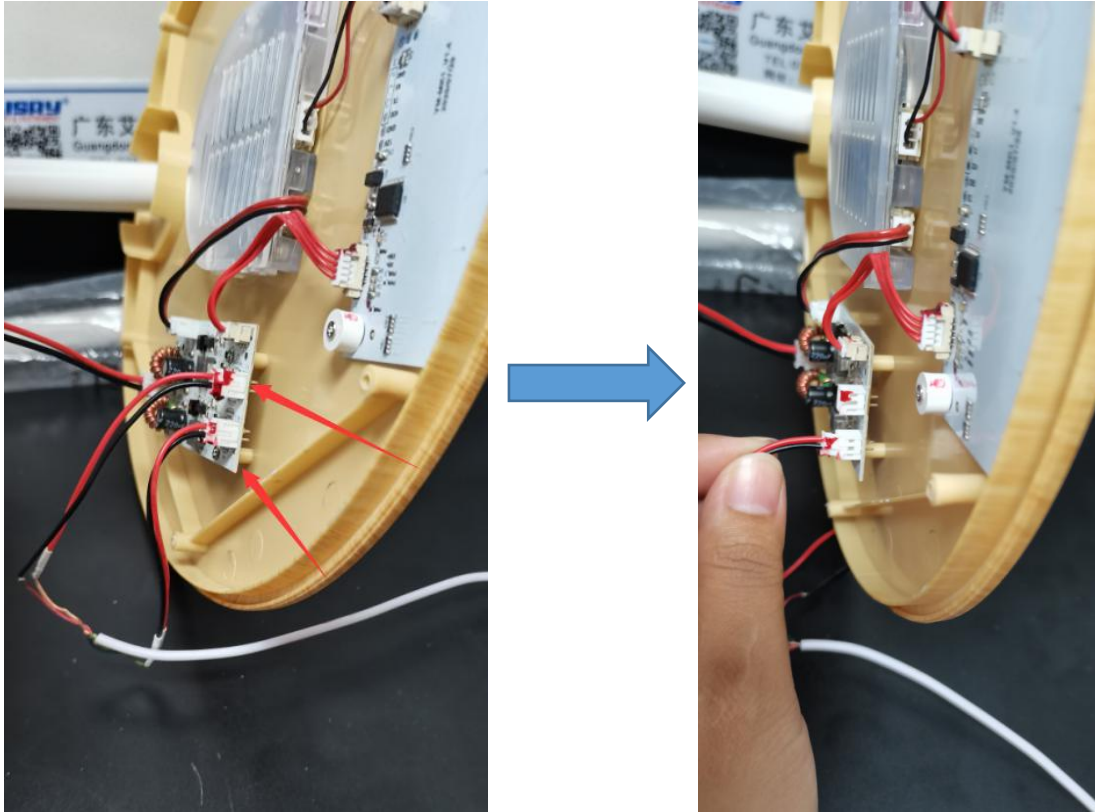
Step4: Use the soldering iron to unsolder.



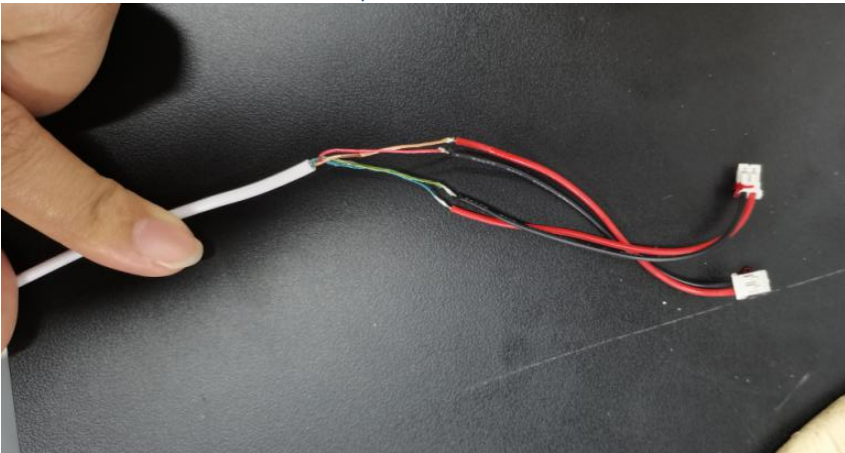
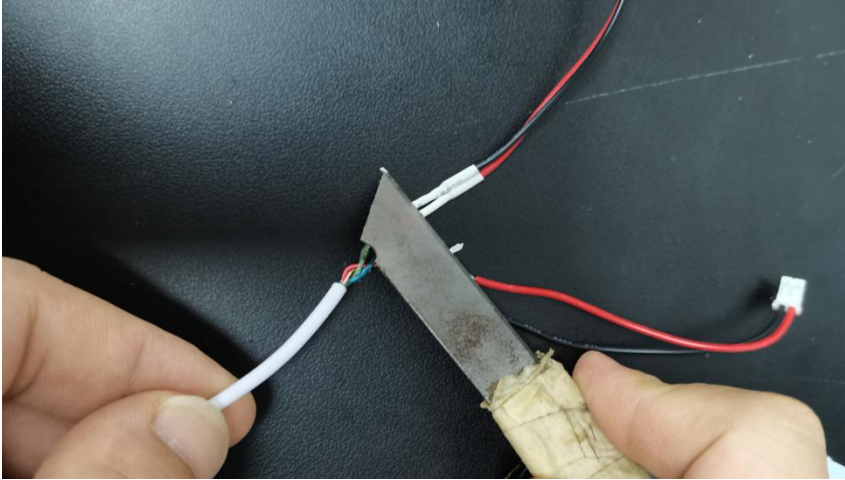
Step5: Pull the white line out by hand from lamp holder.



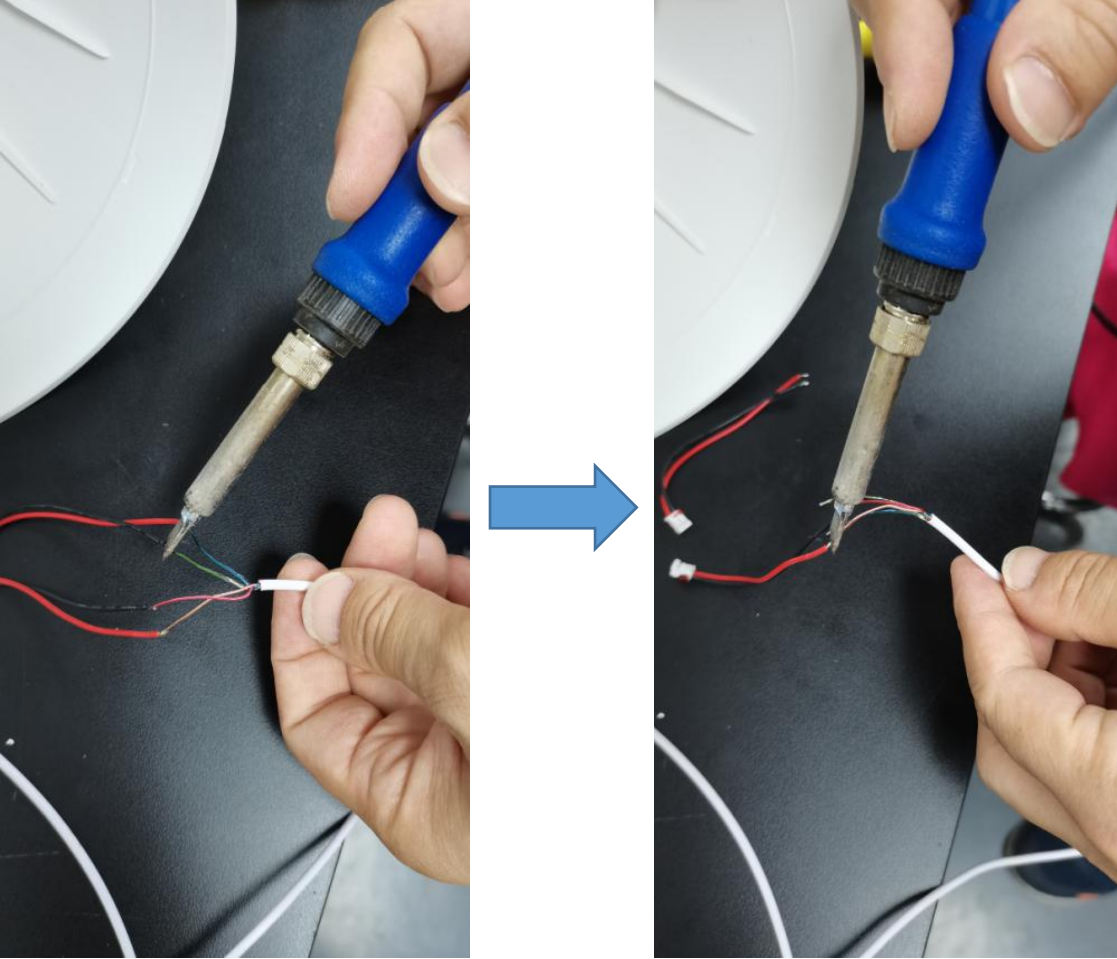
Step6:Detach below two parts of line from the white terminals by hand.



Step7:Remove the heat shrink tube with blade.



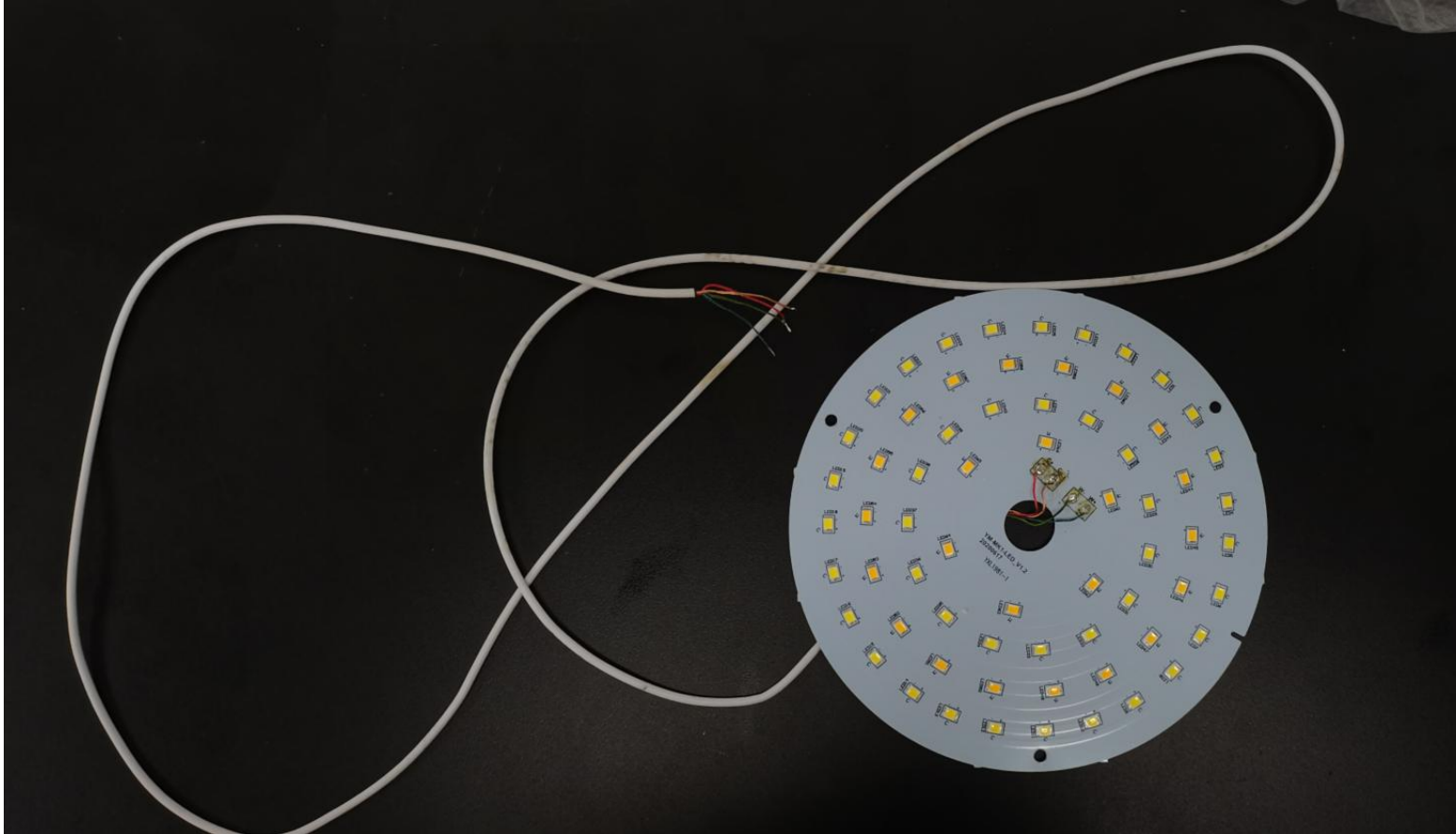
Step8: Use the soldering iron to unsolder the line.



Step9: Solder the lamp board line to the LED PCB board using the soldering iron(need use solder wire).



Step10: Now the light source was removed without being permanently damaged for verification purposes.



Red/Blue line: Positive pole “ + ”

Green/Orange line: Negative pole “-”