

## Product details:

Item No.: 825652

Model No.: K7

Technical data:

Input: 12V/1.5A

CCT: 3000/4200/5500K

Luminous flux: 500Lm Max.

Lighting power: 7.8W Max.

CRI: 80Ra

## Tools list:

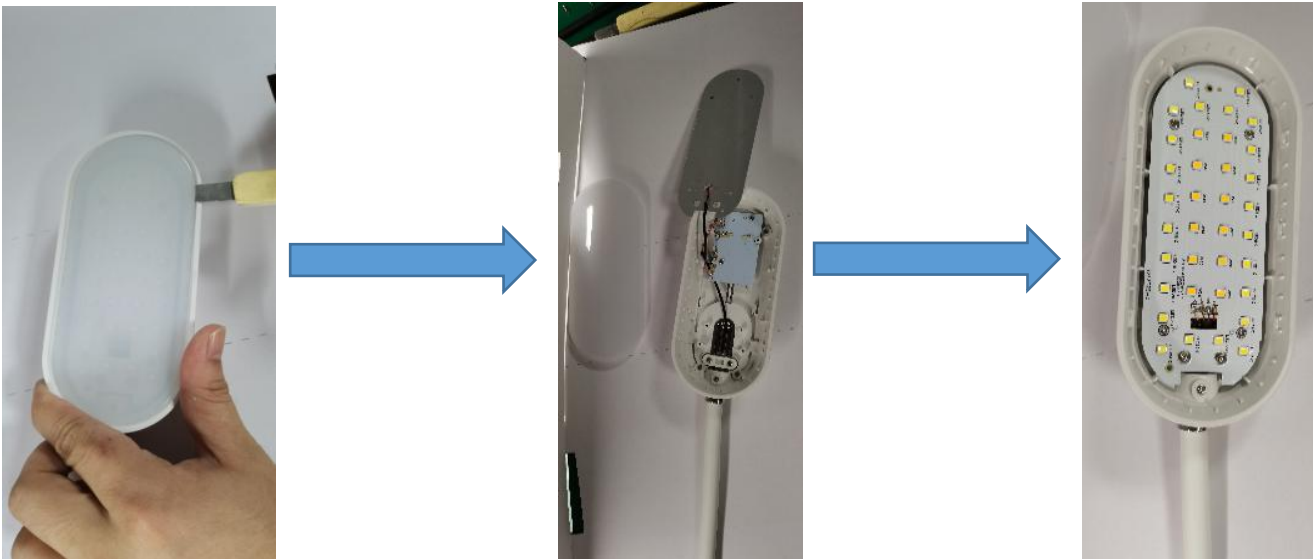


- 1: Pry piece
- 2: Screwdriver(PH0x75mm)
- 3: Soldering iron

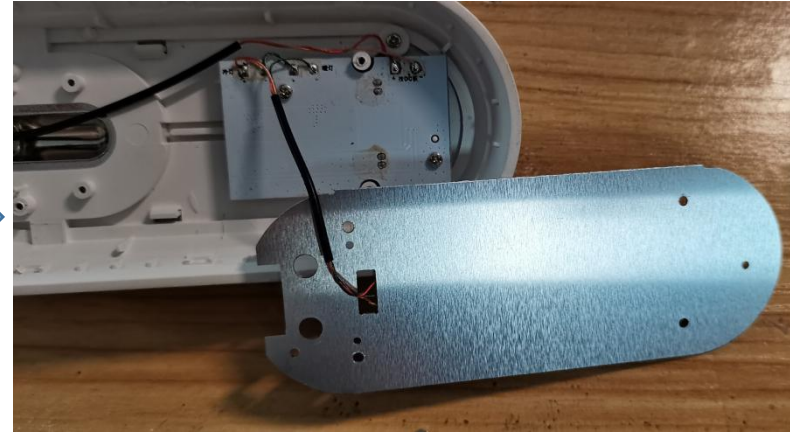
## Instructions on how to remove the light source:

Note: Please operate following steps when the product is powered off.

Step1: Pry the shell of lamp hold off directly with the pry piece.



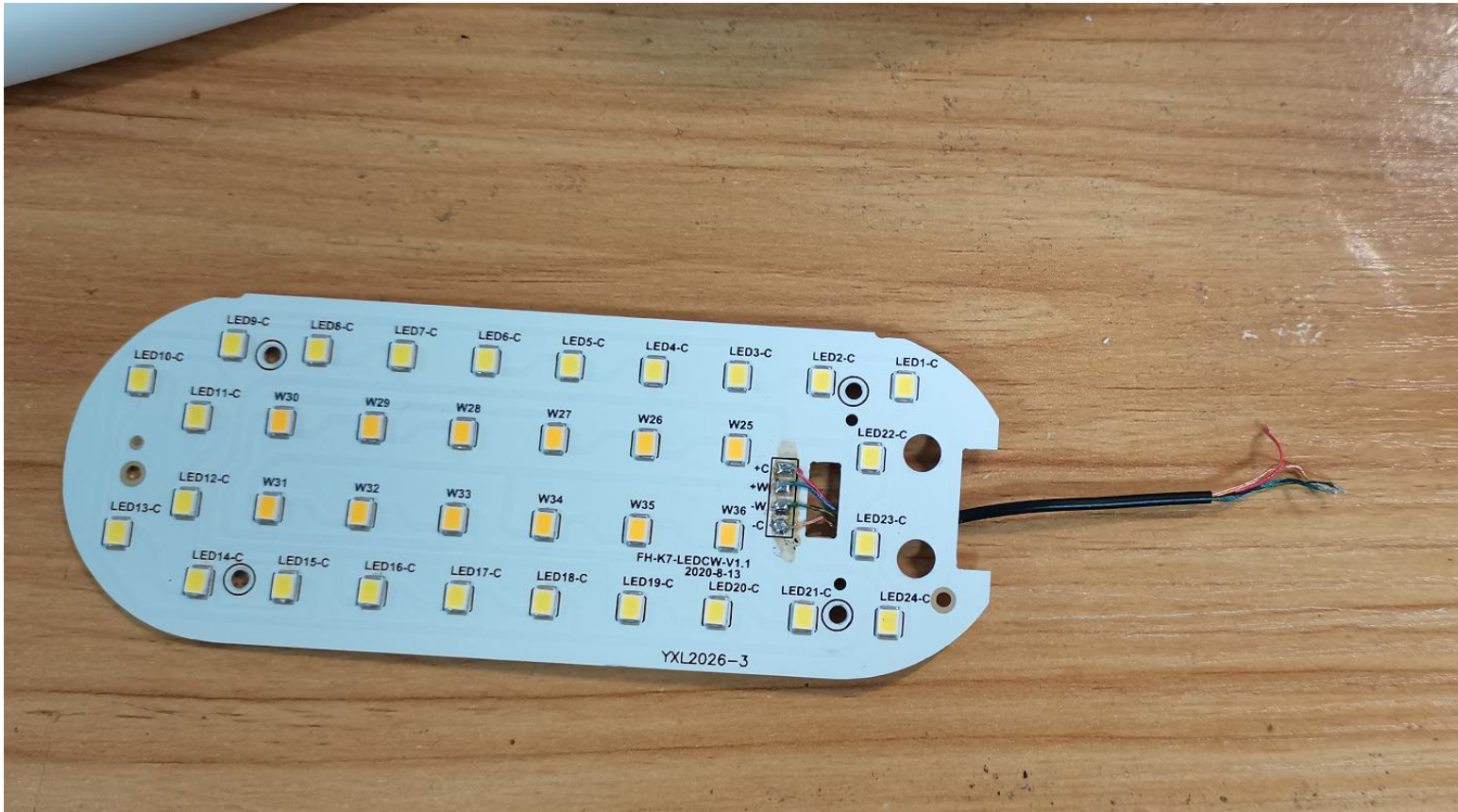
Step2: Remove the 6 screws with the screwdriver(PH0x75mm).



Step3: Use the soldering iron to unsolder.



Step4: Now the light source was removed without being permanently damaged for verification purposes.



Red/Blue line: Positive pole “ + ”

Green/Orange line: Negative pole “ - ”