

Product details:

Item No.: 825608

Model No.: X5

Technical data:

Input:5V/1A

CCT: 4000K

Luminous flux: 200Lm

Lighting power: 5W

CRI: 80Ra

Tools list:



- 1: Soldering iron
- 2: Pry pieces
- 3: Screwdriver(PH0x75mm)
- 4: Thermal chimney

Instructions on how to remove the light source:

Note: Please operate following steps when the product is powered off.

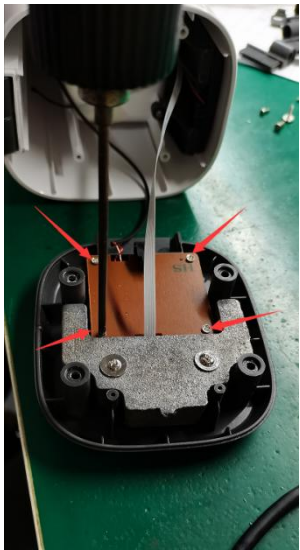
Step1: Remove the sponge pad on bottom by hand.



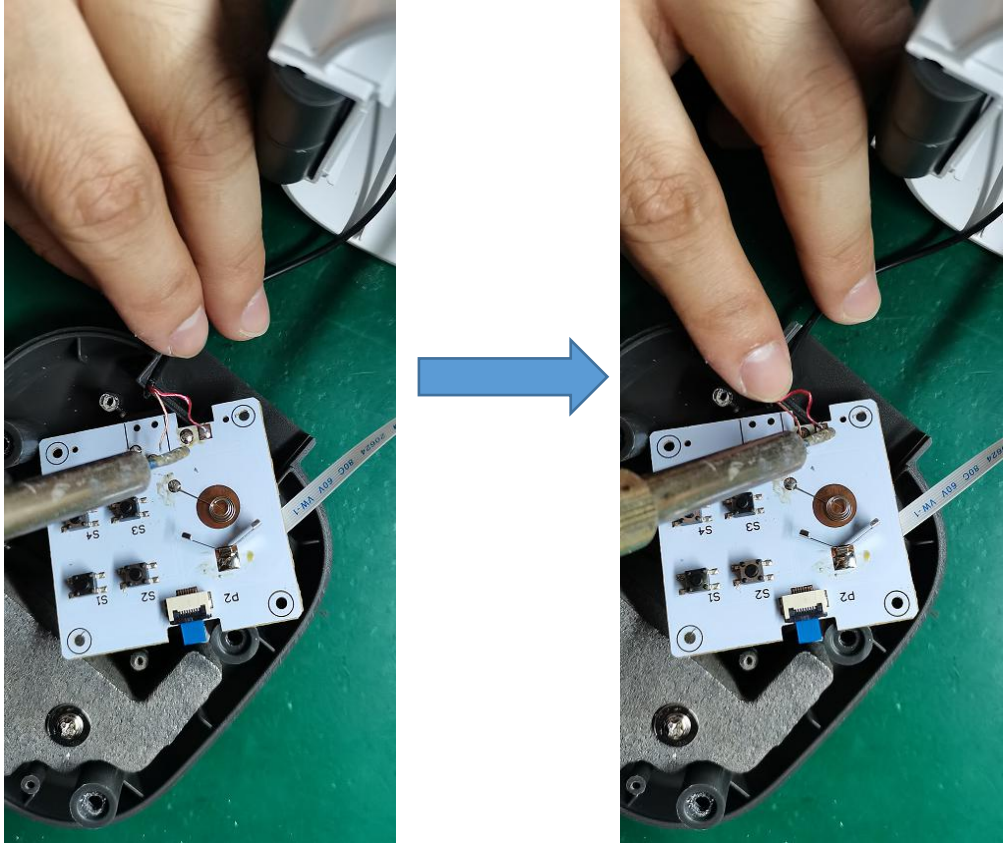
Step2: Remove the 4 screws with the screwdriver(PH0x75mm).



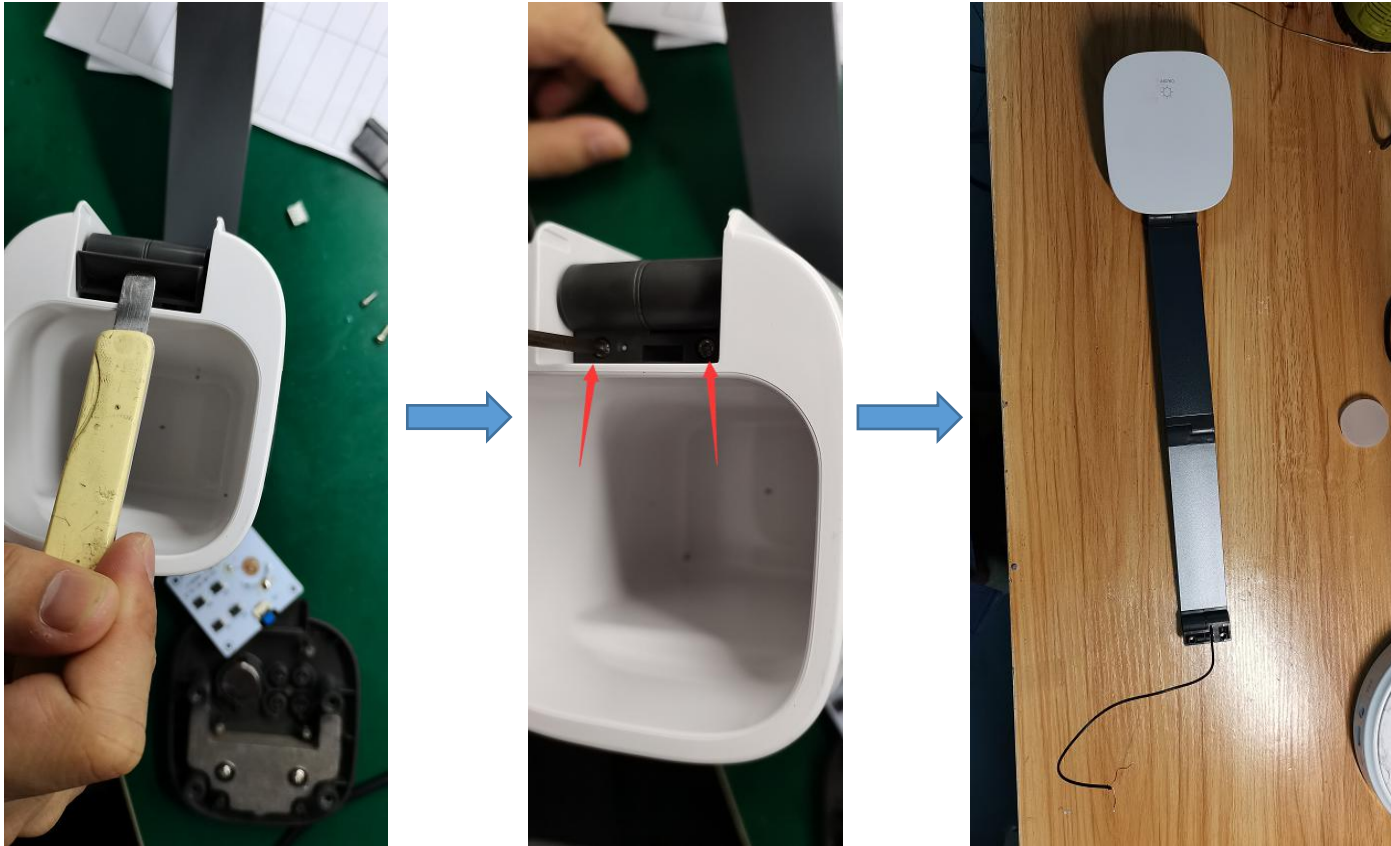
Step3: Remove the 4 screws with the screwdriver(PH0x75mm).



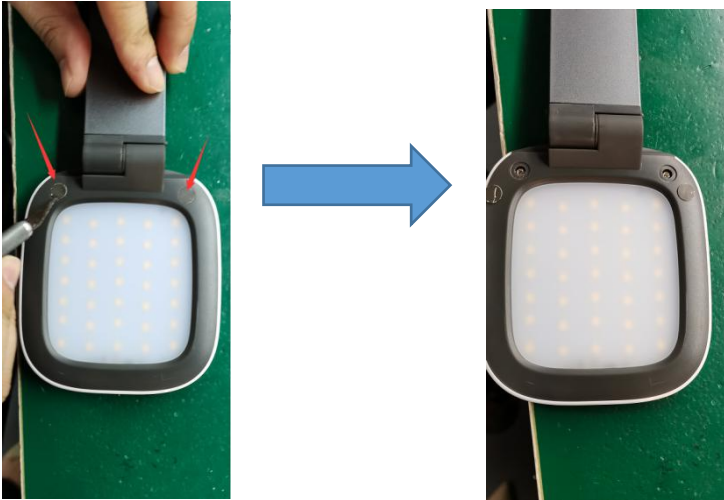
Step4: Use the soldering iron to unsolder the wire from PCB board.



Step5: Pry below part off directly with the pry piece then remove the 2 screws with the screwdriver(PH0x75mm).



Step6: Remove the 2 screw mats on lamp holder.



Step7: Remove the 2 screws on lamp holder with the screwdriver



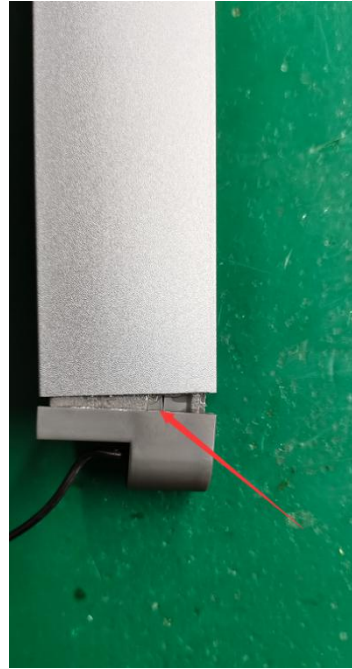
Step8: Pry the shell of lamp hold off directly with the pry piece.



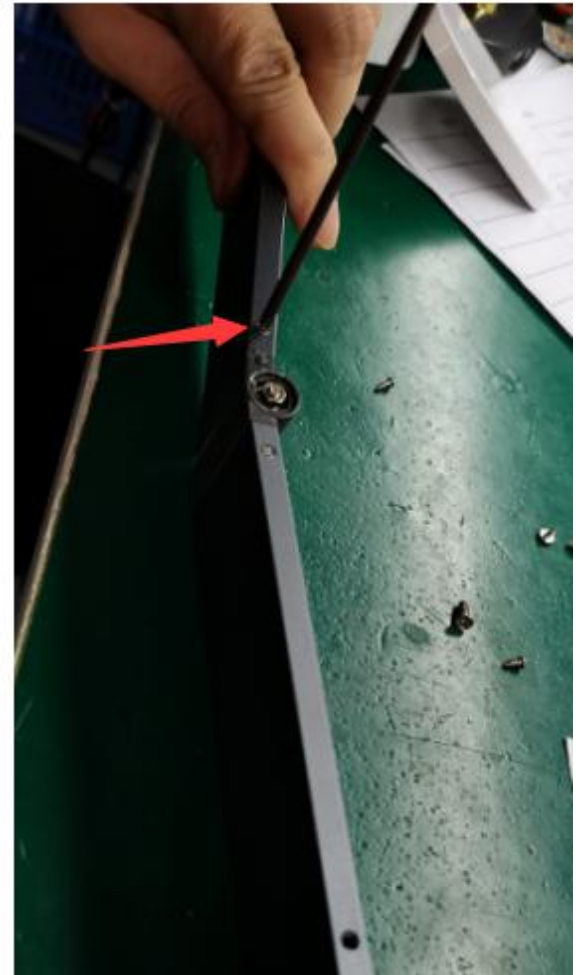
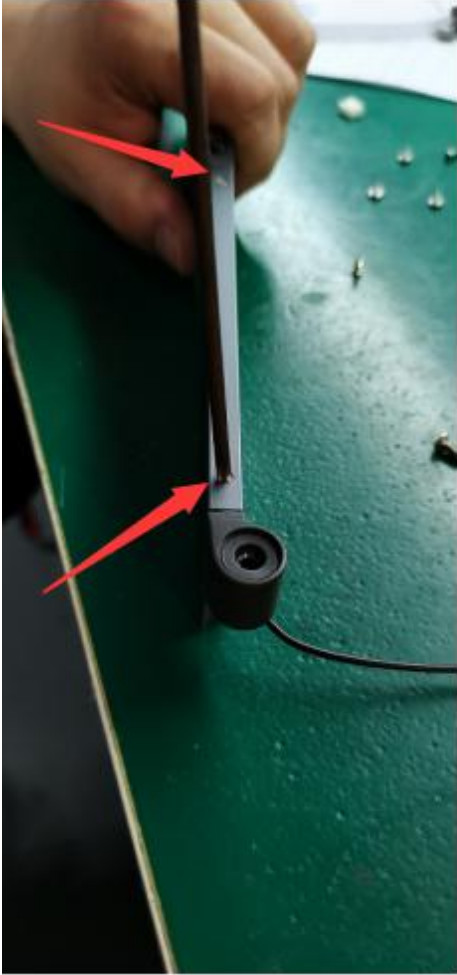
Step9: Remove the 4 screws with the screwdriver.



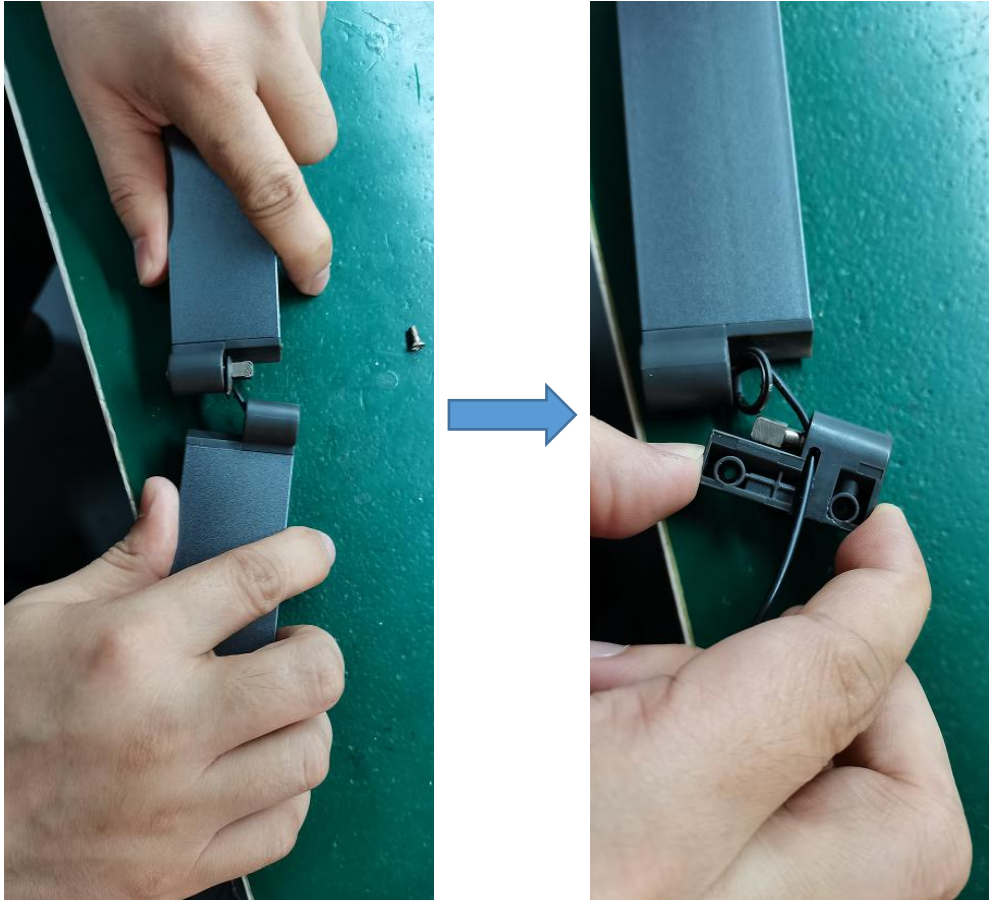
Step10: Bake the pole over a thermal chimney to melt the glue inside, then the part at below arrow is going to come off.



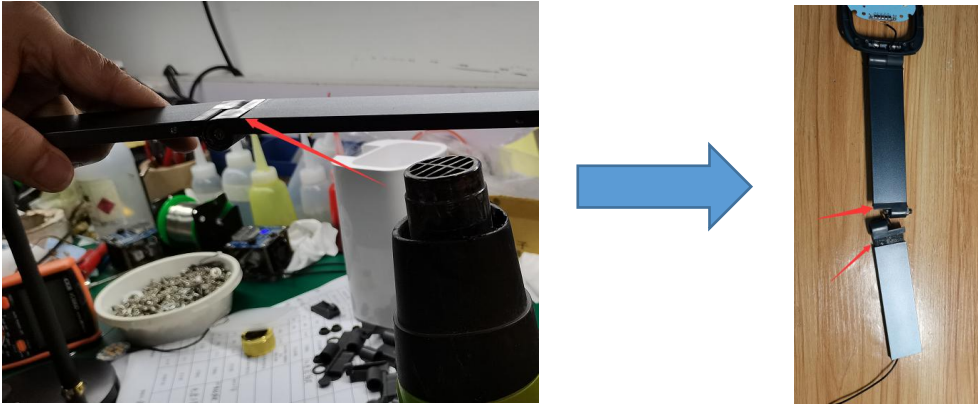
Step11: Remove the 8 screws(there are 4 screws on each side) at below arrow with the screwdriver(PH0x75mm).



Step12: Use hands to separate the bottom two parts.



Step13: Bake the pole over a thermal chimney to melt the glue inside, then the two parts at below arrow is going to come off.



Step14: Remove the 4 screws(there are 2 screws on each side) at below arrow with the screwdriver(PH0x75mm).



Step15: Use hands to separate the lamp holder and lamp-post.



Step16: Bake the pole over a thermal chimney to melt the glue inside, then the part at below arrow is going to come off



Step17: Now the light source was removed without being permanently damaged for verification purposes.

