

Product details:

Item No.: 825596

Model No.: HP-08

Technical data:

Input:12V/1.5A

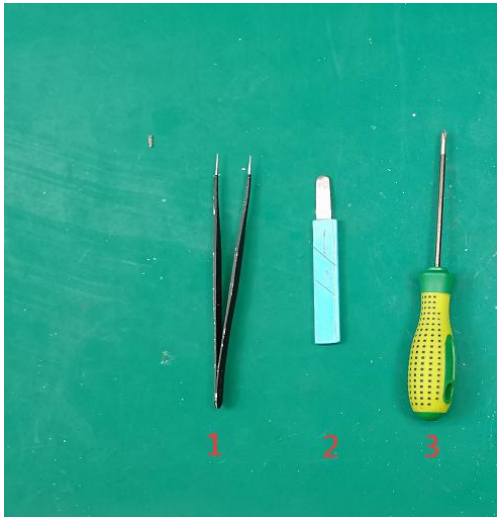
CCT: 2800/4000/5500K

Luminous flux: 1000Lm

Lighting power: 18W Max.

CRI: 80Ra

Tools list:

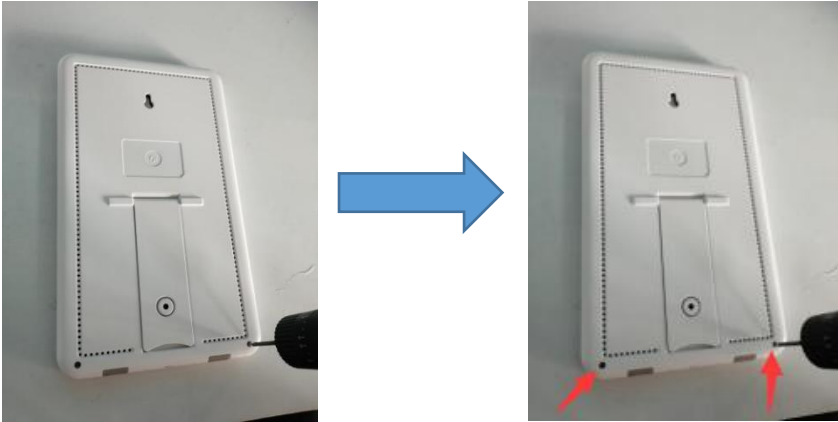


- 1: Tweezers
- 2: Pry piece
- 3: Screwdriver(PH0x75mm)

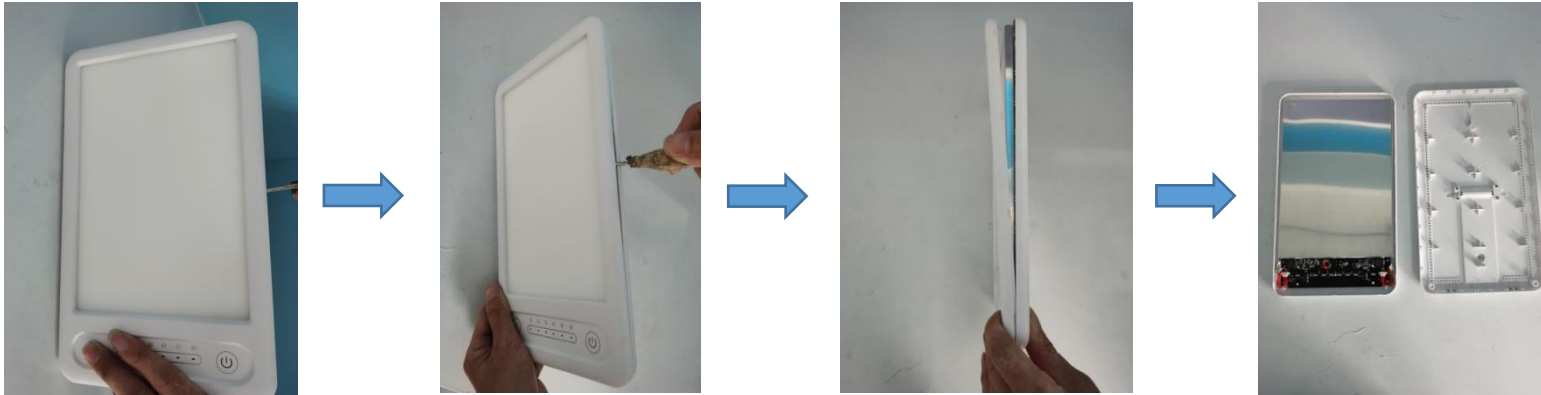
Instructions on how to remove the light source:

Note:Please operate following steps when the product is powered off.

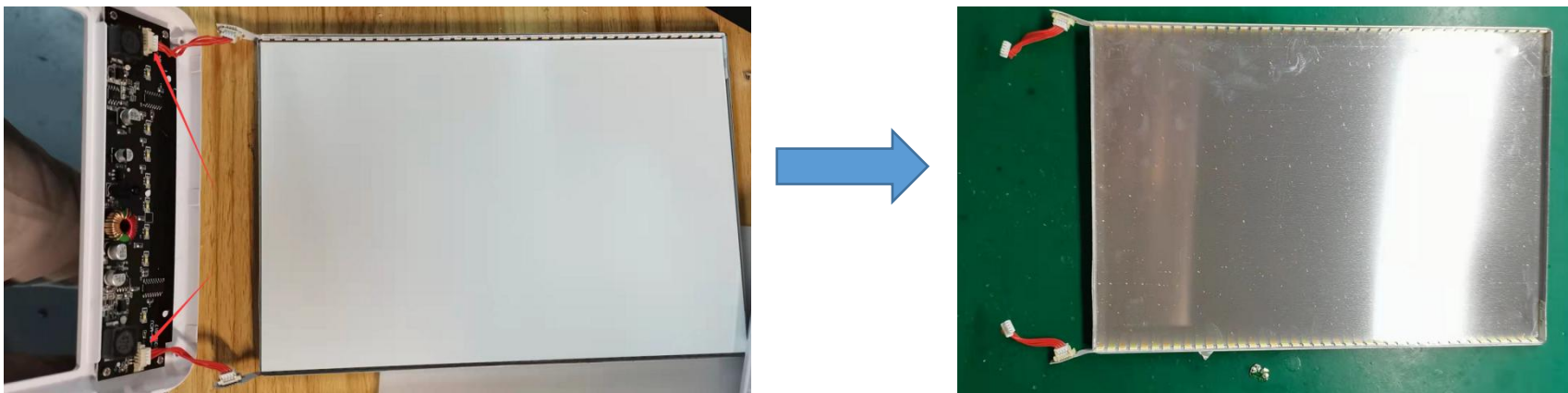
Step1:Remove the 2 screws on the back with the screwdriver(PH0x75mm).



Step2: Pry the shell off directly with the pry piece.



Step3: Use hands to separate below white terminals.



Step4: Use tweezers to remove the white terminals.



Step5: Now the light source was removed without being permanently damaged for verification purposes.

